

WAAS
CH **97519**
W17A

APP CRS
174°

Rwy Idg
TDZE
Apt Elev
3501
1030
1030

RNAV (GPS) RWY 17

BLACKWELL-TONKAWA MUNI (BKN)

RNP APCH.

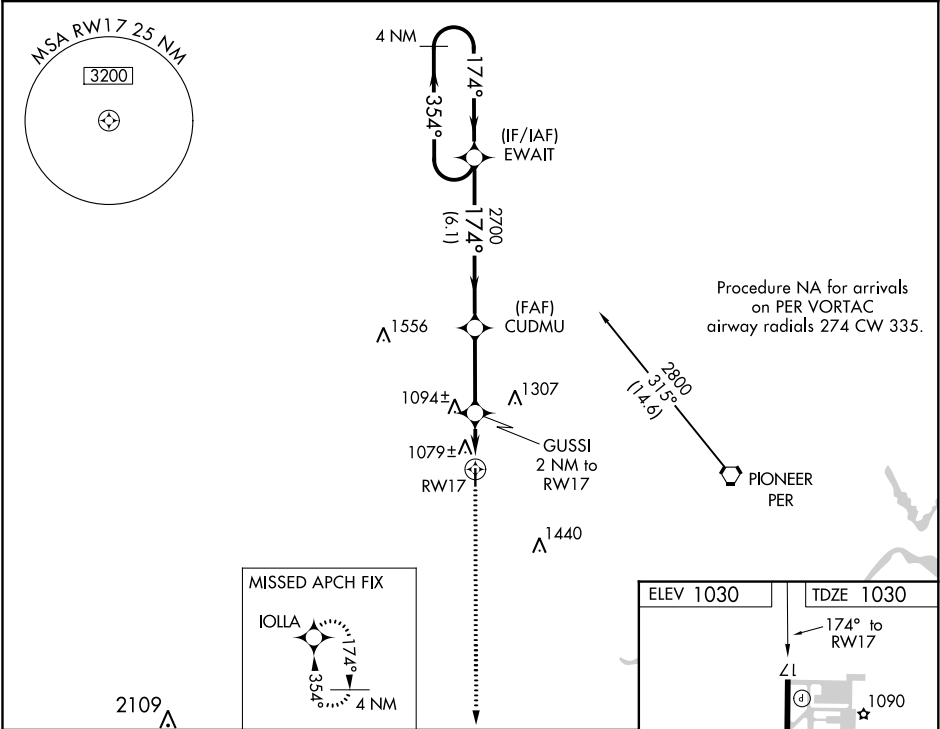
▼

▲

For uncompensated Baro-VNAV systems, LNAV/VNAV NA below -17°C or above 54°C. Rwy 17 helicopter visibility reduction below ¾ SM NA.
When local altimeter setting not received, use Ponca City altimeter setting and increase all DA 31 feet and all MDA 40 feet and LNAV Cat C visibility ¼ mile.
Baro-VNAV NA when using Ponca City altimeter setting.

MISSED APPROACH: Climb to 2800 direct IOLLA and hold.

AWOS-3 120.575	KANSAS CITY CENTER 127.8 319.1	UNICOM 122.8 (CTAF) 0
--------------------------	--	---------------------------------



4 NM Holding Pattern		VGSI and RNAV glidepath not coincident.		2800	IOLLA
EWAIT		CUDMU		*INAV only	
2800 ← 354°		174° →		RW17	
GP 3.00° TCH 40°		2700		GUSSI 2 NM to RW17	
		*1700			
		6.1 NM		3.1 NM	
				2 NM	
CATEGORY	A	B	C	D	
LPV DA	1280-1	250 (300-1)		NA	
LNAV/VNAV DA	1376-1¼	346 (400-1¼)		NA	
LNAV MDA	1400-1	370 (400-1)		NA	

ELEV 1030

TDZE 1030

174° to RW17

Δ1

1090

3501 X 60

0.6% UP

35

P

MIRL Rwy 17-35 0