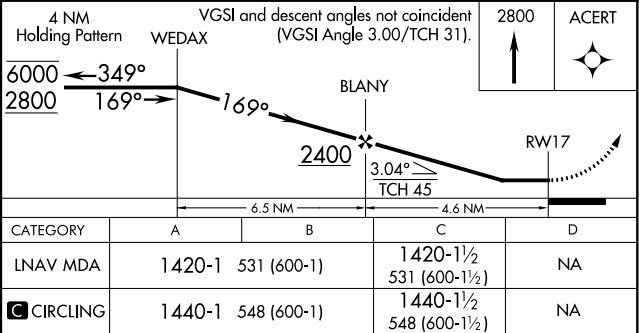
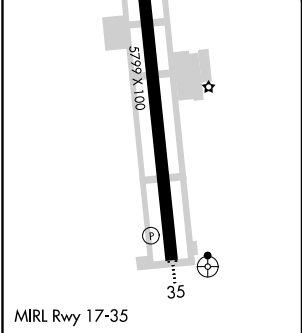
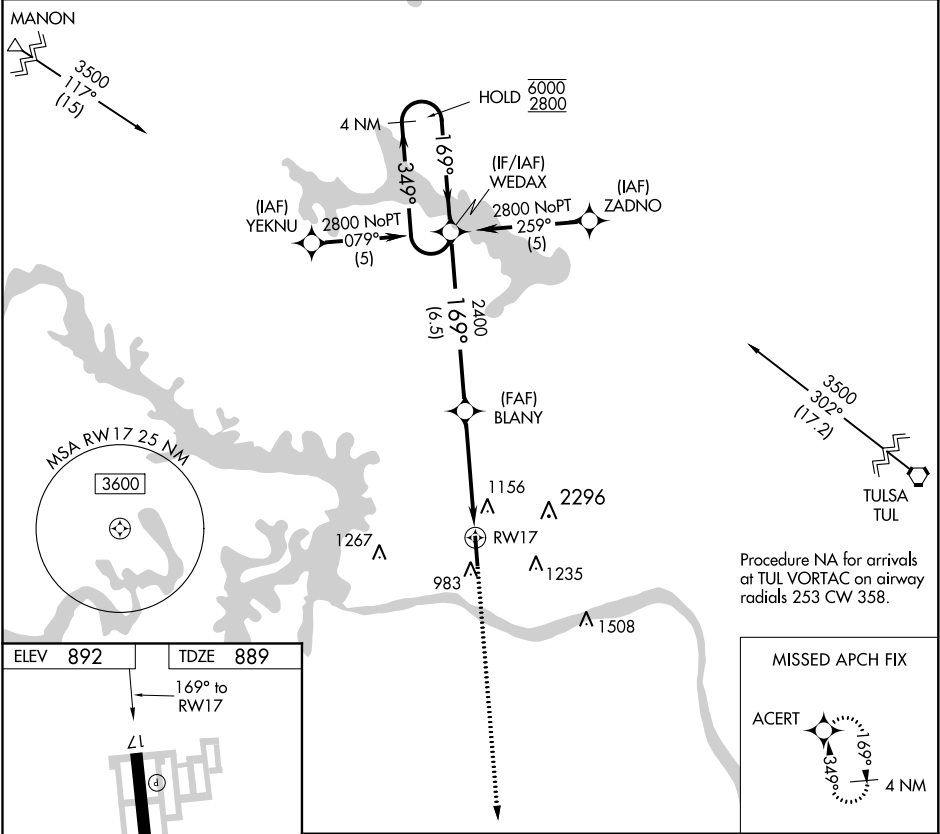


APP CRS	Rwy Idg	5799
169°	TDZE	889
	Apt Elev	892

RNAV (GPS) RWY 17
WILLIAM R POGUE MUNI (OWP)

RNP APCH.	Rwy 17 helicopter visibility reduction below 1 SM NA. Procedure NA at night. Circling NA for Cat C east of Rwy 17-35.	MISSED APPROACH: Climb to 2800 direct ACERT and hold.
-----------	--	---

AWOS-3 118.325	TULSA APP CON 124.0 338.3	UNICOM 122.7 (CTAF)
-------------------	------------------------------	------------------------



SC-1, 31 DEC 2020 to 28 JAN 2021

SC-1, 31 DEC 2020 to 28 JAN 2021