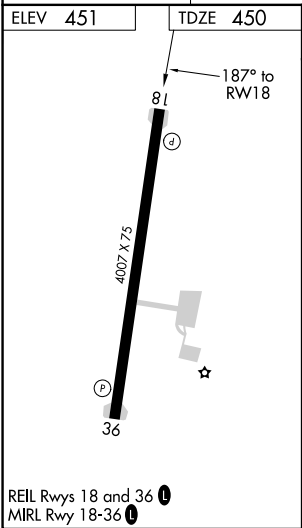
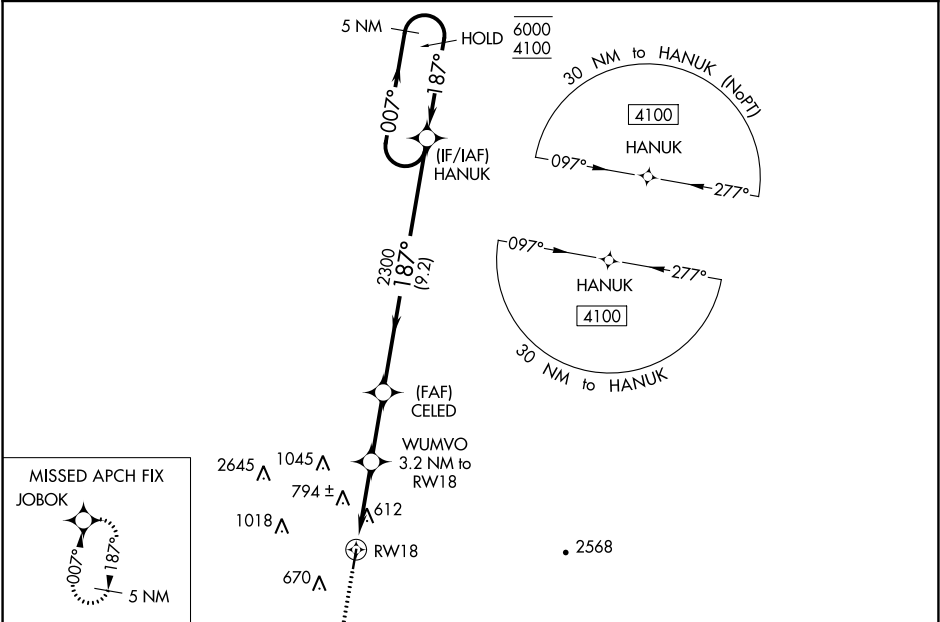


WAAS CH 56443 W18A	APP CRS 187°	Rwy Idg TDZE 450 Apt Elev 451
--	------------------------	---

RNAV (GPS) RWY 18
ROBERT S KERR (RKR)

RNP APCH. <div><div><div></div><div>Rwy 18 helicopter visibility reduction below ¾ SM NA. For uncompensated Baro-VNAV systems, LNAV/VNAV NA below -15°C or above 54°C. Circling NA for Cats C and D west of Rwy 18-36.</div></div><div></div></div>	MISSED APPROACH: Climb to 4100 direct JOBOK and hold, continue climb-in-hold to 4100.
--	---

AWOS-3 120.625	RAZORBACK APP CON ★ 120.9 343.75	UNICOM 122.8 (CTAF) ①
--------------------------	--	---------------------------------



ELEV 451	TDZE 450				
187° to RWY 18		5 NM Holding Pattern			
JOBOK		WUMVO 3.2 NM to RWY 18			
*LNAV only		CELED			
*1.4 NM to RWY 18		2300			
RWY 18		1500*			
1.4 NM		1.8 NM		2.5 NM	
2.5 NM		9.2 NM			
CATEGORY	A	B	C	D	
LPV DA	700-1		250 (300-1)		
LNAV/VNAV DA	926-1¾		476 (500-1¾)		
LNAV MDA	940-1	490 (500-1)	940-1¾	490 (500-1¾)	
CIRCLING	1000-1 549 (600-1)	1100-1 649 (700-1)	1100-1¾ 649 (700-1¾)	1160-2¼ 709 (800-2¼)	