

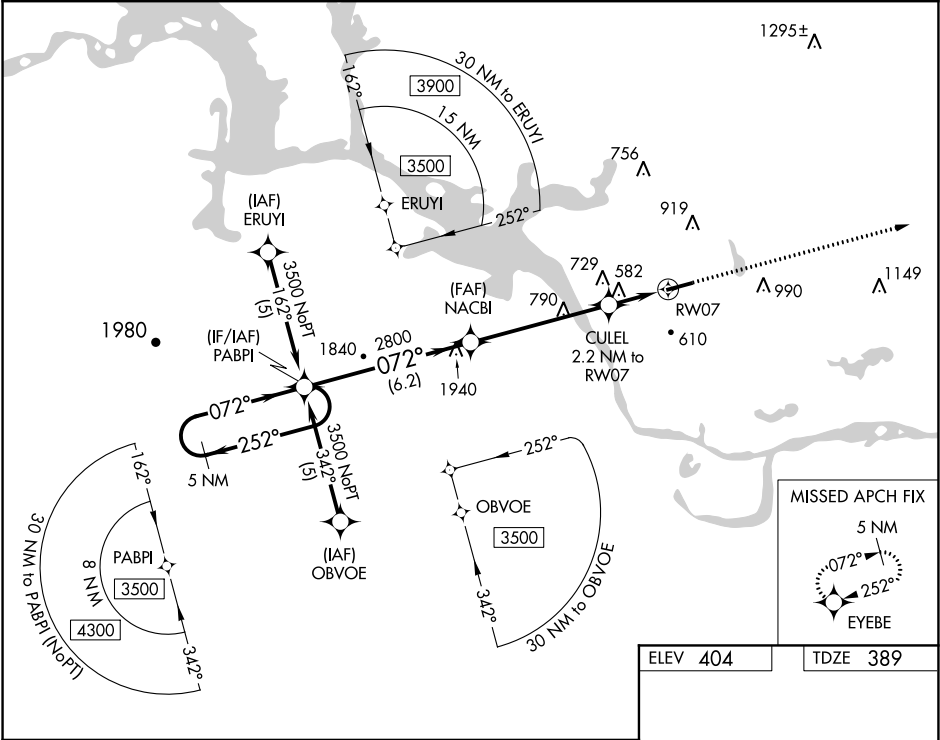
WAAS CH <b>53601</b> <b>W07A</b>	APP CRS <b>072°</b>	Rwy Idg TDZE <b>389</b> Apt Elev <b>404</b>
--	------------------------	---

RNAV (GPS) RWY 7

RUSSELLVILLE RGNL (RUE)

<div><div></div><div>If local altimeter setting not received, procedure NA. DME/DME RNP-0.3 NA.</div></div>	MISSED APPROACH: Climb to 3000 direct EYEBE and hold.
---	---

ASOS <b>132.475</b>	RAZORBACK APP CON <b>120.9 343.75</b>	MEMPHIS CENTER <b>128.475 377.15</b>	UNICOM <b>122.7 (CTAF) 0</b>
------------------------	--	---	---------------------------------



5 NM Holding Pattern		VGSI and RNAV glidepath angles not coincident (VGSI Angle 3.00/TCH 60).		3000	EYEBE
PABPI		NACBI		*LNNAV only.	
3500		2800		CULEL 2.2 NM to RW07	
GP 3.00° TCH 49		*1120		RW07	
6.2 NM		5.1 NM		2.2 NM	
CATEGORY	A	B	C	D	
LPV DA	664-1 275 (300-1)				
LNNAV MDA	1000-1	611 (600-1)	1000-1¾ 611 (600-1¾)	1000-2 611 (600-2)	
CIRCLING	1140-1	737 (800-1)	1140-2 737 (800-2)	1220-2¾ 817 (900-2¾)	

