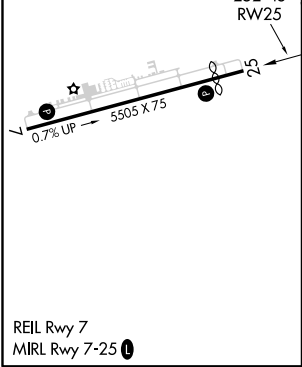
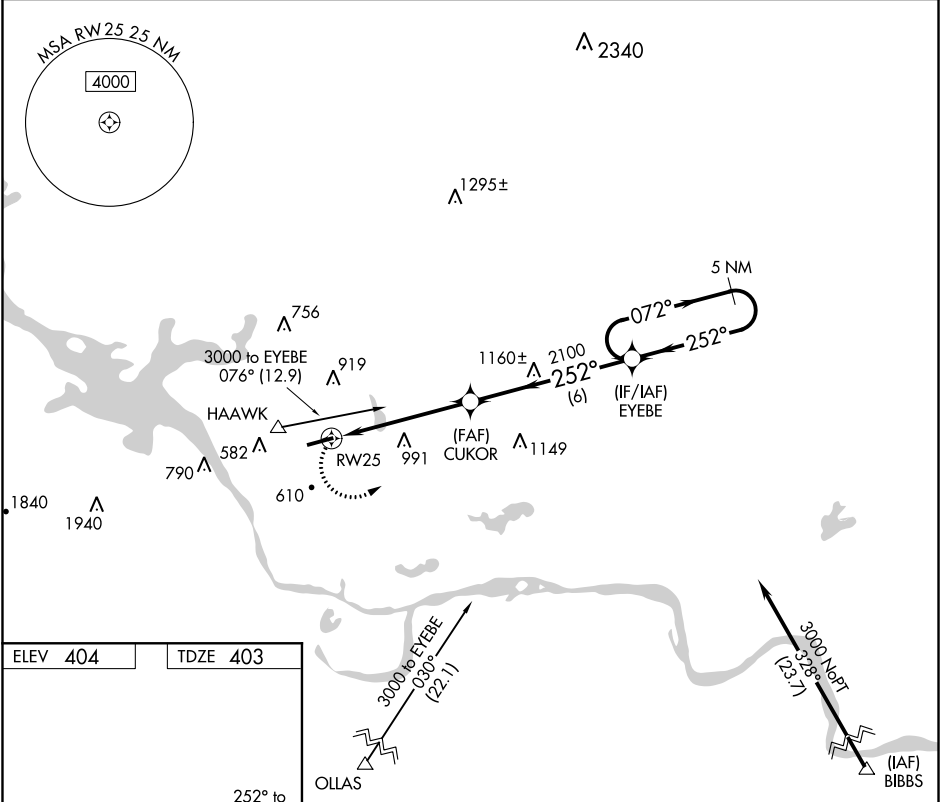


APP CRS	Rwy Idg	4799
252°	TDZE	403
	Apt Elev	404

RNAV (GPS) RWY 25  
RUSSELLVILLE RGNL (RUE)

DME/DME RNP-0.3 NA. Helicopter visibility reduction below 1 SM NA. Night landing: Rwy 25 NA.		MISSED APPROACH: Climbing left turn to 3000 direct EYEBE WP and hold.	
ASOS	RAZORBACK APP CON	MEMPHIS CENTER	UNICOM
132.475	120.9 343.75	128.475 377.15	122.7 (CTAF) 0



Visual Segment - Obstacles.		EYEBE		5 NM Holding Pattern	
3000		EYEBE		3000	
RW25		CUKOR		2100	
5.2 NM		6 NM			
CATEGORY	A	B	C	D	
LNAV MDA	1260-1 857 (900-1)	1260-1¼ 857 (900-1¼)	1260-2½ 857 (900-2½)	1260-2¾ 857 (900-2¾)	
CIRCLING	1260-1 857 (900-1)	1260-1¼ 857 (900-1¼)	1260-2½ 857 (900-2½)	1260-2¾ 857 (900-2¾)	

SC-1, 31 DEC 2020 to 28 JAN 2021

SC-1, 31 DEC 2020 to 28 JAN 2021