

ELK CITY, OKLAHOMA

AL-6098 (FAA)

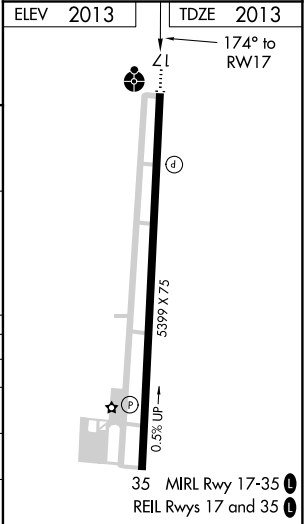
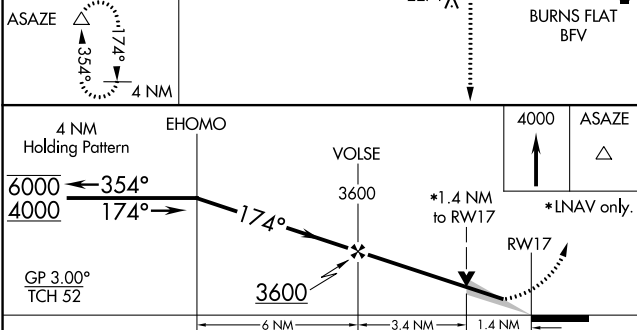
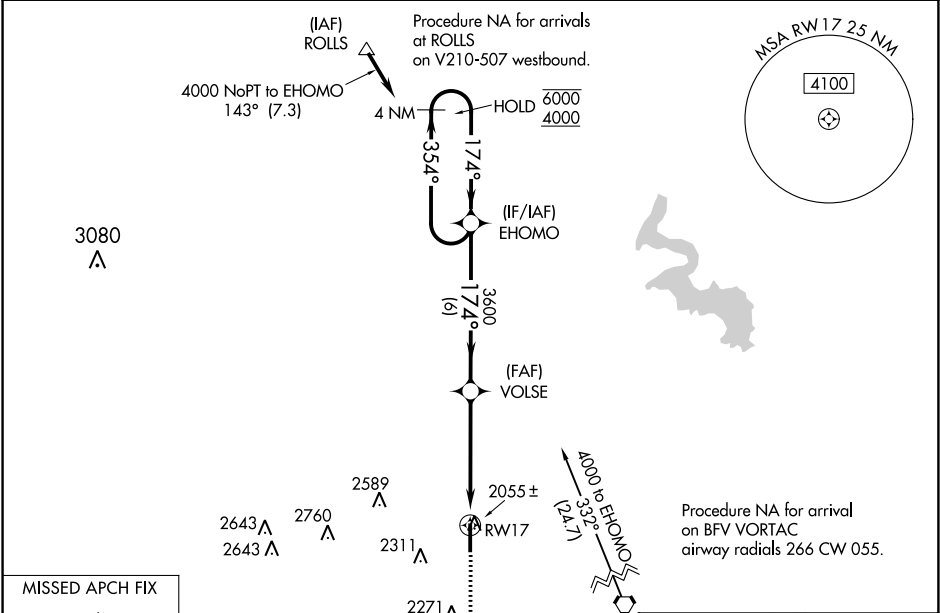
19227

WAAS CH <b>82408</b> <b>W17A</b>	APP CRS <b>174°</b>	Rwy Idg TDZE <b>2013</b> Apt Elev <b>2013</b>
--	------------------------	---

RNAV (GPS) RWY 17  
ELK CITY RGNL BUSINESS (ELK)

RNP APCH.	ODALS ⬆️ ⬆️ ⬆️	MISSED APPROACH: Climb to 4000 direct ASAZE and hold.
▼ For uncompensated Baro-VNAV systems, LNAV/VNAV NA below -18°C or above 54°C. Inop table does not apply to LPV, LNAV/VNAV all Cats and LNAV Cats C/D.		

AWOS-3 <b>118.225</b>	FORT WORTH CENTER <b>128.4 269.37</b>	UNICOM <b>122.8 (CTAF) 0</b>
--------------------------	--	---------------------------------



CATEGORY	A	B	C	D
LPV DA		2263-3/4	250 (300-3/4)	
LNAV/VNAV DA		2263-3/4	250 (300-3/4)	
LNAV MDA	2520-3/4 507 (600-3/4)		2520-13/8 507 (600-13/8)	
CIRCLING	2520-1 507 (600-1)	2680-1 667 (700-1)	2680-13/4 667 (700-13/4)	2940-3 927 (1000-3)

ELK CITY, OKLAHOMA  
Amdt 2A 15AUG19

35°26'N-99°24' W

ELK CITY RGNL BUSINESS (ELK)  
RNAV (GPS) RWY 17

SC-1, 31 DEC 2020 to 28 JAN 2021

SC-1, 31 DEC 2020 to 28 JAN 2021