

WAAS CH 81824 W01A	APP CRS 011°	Rwy Idg TDZE 253 Apt Elev 265	6008
--	------------------------	---	-------------

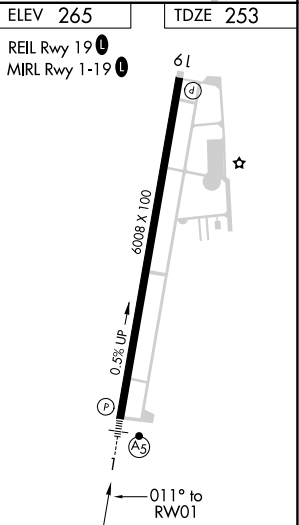
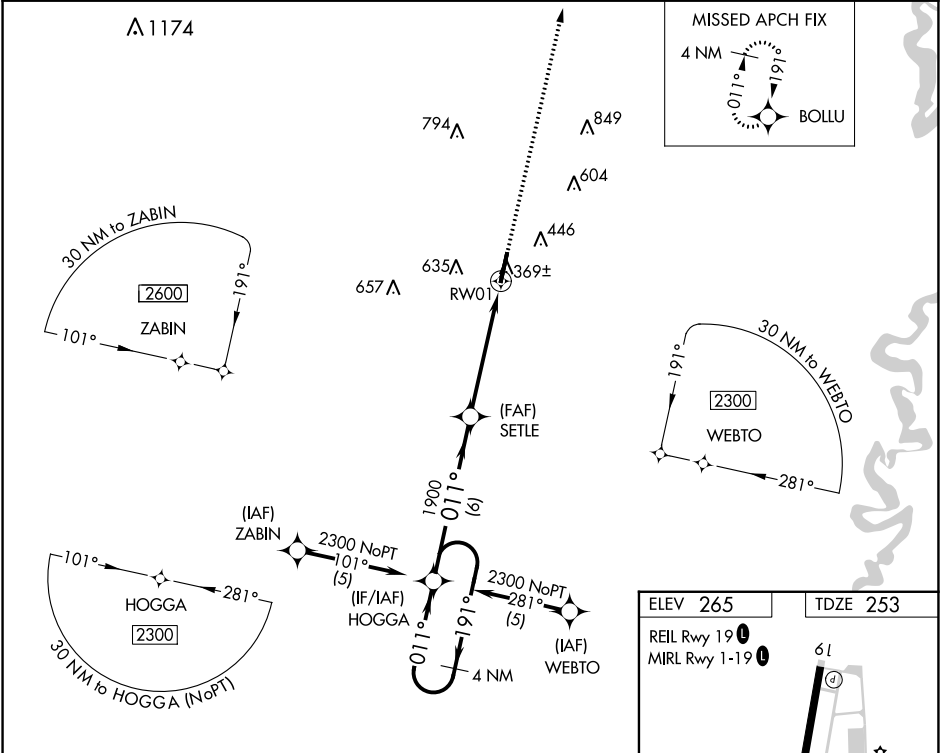
RNAV (GPS) RWY 1
SEARCY MUNI (SRC)

⚠ Circling NA for Cat C west of Rwy 1-19. DME/DME RNP-0.3 NA. VDP NA with Little Rock Bill and Hillary Clinton National/Adams Field altimeter setting. When local altimeter setting not received, use Little Rock Bill and Hillary Clinton National/Adams Field altimeter setting and increase all DA 87 feet and all MDA 100 feet, increase LPV all Cats and LNAV Cat C visibility ¼ mile. For inoperative MALSR, increase LPV all Cats visibility to 1 ¼ mile. For inoperative MALSR, when using Little Rock Bill and Hillary Clinton National/Adams Field altimeter setting, increase LPV all Cats visibility to 1 ½ mile.

MALSR
AS

MISSED APPROACH:
Climb to 2900 direct
BOLLU and hold.

AWOS-3PT 128.325	LITTLE ROCK APP CON 119.75 291.775	CLNC DEL 119.75	UNICOM 122.7 (CTAF)
----------------------------	--	---------------------------	-------------------------------



4 NM Holding Pattern		VGSI and RNAV glidepath not coincident (VGSI Angle 3.00/TCH 57).		2900	BOLLU
2300		HOGGA		SETLE	
GP 3.00° TCH 54		1900		1900	
6 NM		4 NM		1 NM	
CATEGORY	A	B	C	D	
LPV DA		573-¾	320 (400-¾)	NA	
LNAV MDA		620-½	367 (400-½)	NA	
CIRCLING	760-1	495 (500-1)	760-1½ 495 (500-1½)	NA	

SC-1, 31 DEC 2020 to 28 JAN 2021

SC-1, 31 DEC 2020 to 28 JAN 2021