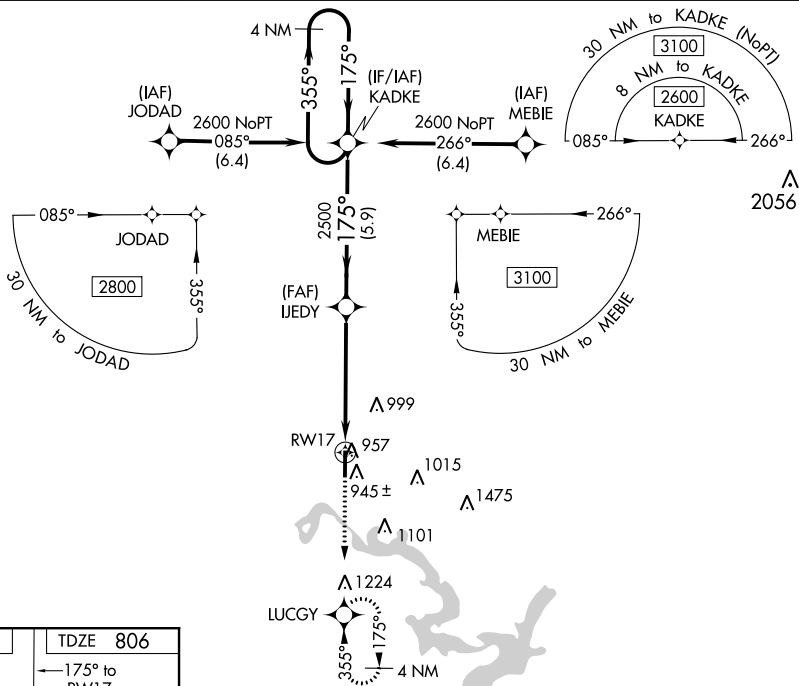


RNAV (GPS) RWY 17
MIAMI RGNL (MIO)

MISSED APPROACH: Climb to 2500 direct LUCGY and hold.

- T** Baro-VNAV and VDP NA when using Grove altimeter setting.
A Rwy 17 helicopter visibility reduction below $\frac{3}{4}$ SM NA. When local altimeter setting not received, use Grove altimeter setting.

UNICOM
122.8 (CTAF) **L**

ELEV 806

TDZE 806

175° to RW17

35

5020 X 100

REIL Rwy 35

MRL Rwy 17-35

4 NM Holding Pattern

VGS1 and RNAV glidepath not coincident (VGS1 Angle 3.00/TCH 42).

2500

LUCGY

KADKE

UJEDY

2500

* 1.5 NM to RW17

RW17

* LNAV only

2600

355°

175°

175°

5.9 NM

3.7 NM

1.5 NM

GP 3.00° TCH 31

CATEGORY	A	B	C	D
LNAV/ VNAV	DA	1206-1 $\frac{1}{8}$ 400 (400-1 $\frac{1}{8}$)		
LNAV	MDA	1320-1 514 (600-1)	1320-1 $\frac{3}{8}$ 514 (600-1 $\frac{3}{8}$)	NA
C CIRCLING		1320-1 514 (600-1)	1460-1 $\frac{3}{4}$ 654 (700-1 $\frac{3}{4}$)	NA

SC-1, 31 DEC 2020 to 28 JAN 2021