

APP CRS  
**079°**

Rwy Idg  
TDZE  
Apt Elev

**5001**  
**355**  
**355**

RNAV (GPS) RWY 8

J LYNN HELMS SEVIER COUNTY (DEQ)

RNP APCH.

▼

▲

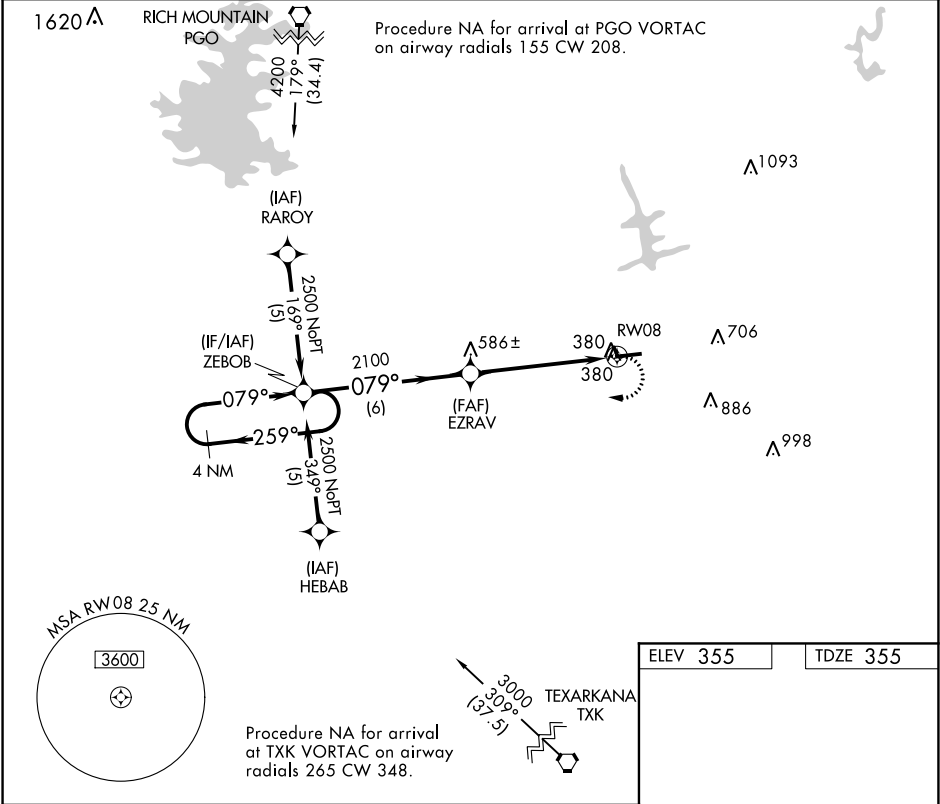
If local altimeter setting not received, use Texarkana altimeter setting and increase all MDAs 100 feet.  
Rwy 8 helicopter visibility reduction below ¾ SM NA.

MISSED APPROACH: Climbing right turn to 2500 direct ZEBOB and hold.

ASOS  
**134.075**

FORT WORTH CENTER  
**123.925 269.475**

UNICOM  
**122.8 (CTAF) 0**



4 NM Holding Pattern ZEBOB

2500 ← 259° 079° →

VGSI and descent angles not coincident (VGSI Angle 3.00/TCH 62).

2100

6 NM 5.3 NM

2500 ZEBOB

3.05° TCH 45

RW08

079° to RW08

5001 X 75

CATEGORY	A	B	C	D
LNAV MDA	780-1	425 (500-1)	NA	
CIRCLING	900-1	545 (600-1)	NA	

REIL Rwy 8 and 26 MIRL Rwy 8-26