

WAAS CH <b>49135</b> <b>W04A</b>	APP CRS <b>040°</b>	Rwy Idg TDZE <b>181</b> Apt Elev <b>182</b>	<b>5002</b>
--	------------------------	---	-------------

RNAV (GPS) RWY 4

DEXTER B FLORENCE MEMORIAL FIELD (ADF)

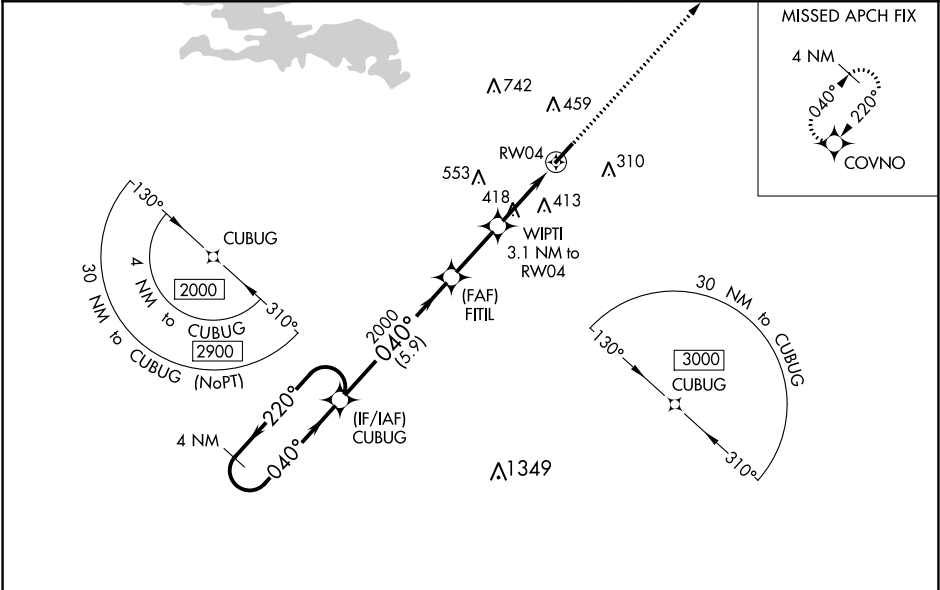
▼

NA

DME/DME RNP-0.3 NA. When local alimeter setting not received use Hot Springs altimeter setting and increase all DA 103 feet and MDA 120 feet and increase LPV all Cats visibility ⅓ mile and LNAV/VNAV all Cats visibility and Circling Cat C visibility ½ mile.  
For uncompensated Baro-VNAV systems, LNAV/VNAV NA below -15°C (5°F) or above 54°C (130°F). Baro-VNAV NA when using Hot Springs altimeter setting. Helicopter visibility reduction below ¾ SM NA. Night landing: Rwy 22 NA.

MISSED APPROACH:  
Climb to 2100 direct COVNO and hold.

AWOS-3PT <b>118.175</b>	MEMPHIS CENTER <b>128.475 377.15</b>	UNICOM <b>122.7 (CTAF)</b> <b>0</b>
----------------------------	---	--



VGSI and RNAV glidepath not coincident (VGSI Angle 3.00/TCH 23).					ELEV 182	TDZE 181
<div>4 NM Holding Pattern</div> <div>CUBUG</div> <div>FITIL</div> <div>2000</div> <div>WIPIT 3.1 NM to RW04</div> <div>2100</div> <div>COVNO</div> <div>*LNAV only.</div>						
<div>2000 ← 220°</div> <div>040° → 2000</div> <div>040°</div> <div>2000</div> <div>*1200</div> <div>RW04</div> <div>GP 3.00° TCH 45</div> <div>5.9 NM</div> <div>2.5 NM</div> <div>3.1 NM</div>						
CATEGORY	A	B	C	D		
LPV DA	431-1 250 (300-1)			NA		
LNAV/VNAV DA	669-1 5/8 488 (500-1 5/8)			NA		
LNAV MDA	680-1	499 (500-1)	680-1 3/8 499 (500-1 3/8)	NA		
CIRCLING	760-1 578 (600-1)	800-1 618 (700-1)	1040-2 1/2 858 (900-2 1/2)	NA		

22

☆

5002 x 75

040° to RW04

MIRL Rwy 4-22

REIL Rws 4 and 22