

WAAS
CH **58302**
W18A

APP CRS
177°

Rwy Idg **5199**
TDZE **1182**
Apt Elev **1182**

RNAV (GPS) RWY 18

UNIVERSITY OF OKLAHOMA WESTHEIMER (OUN)

RNP APCH.

▼
▲

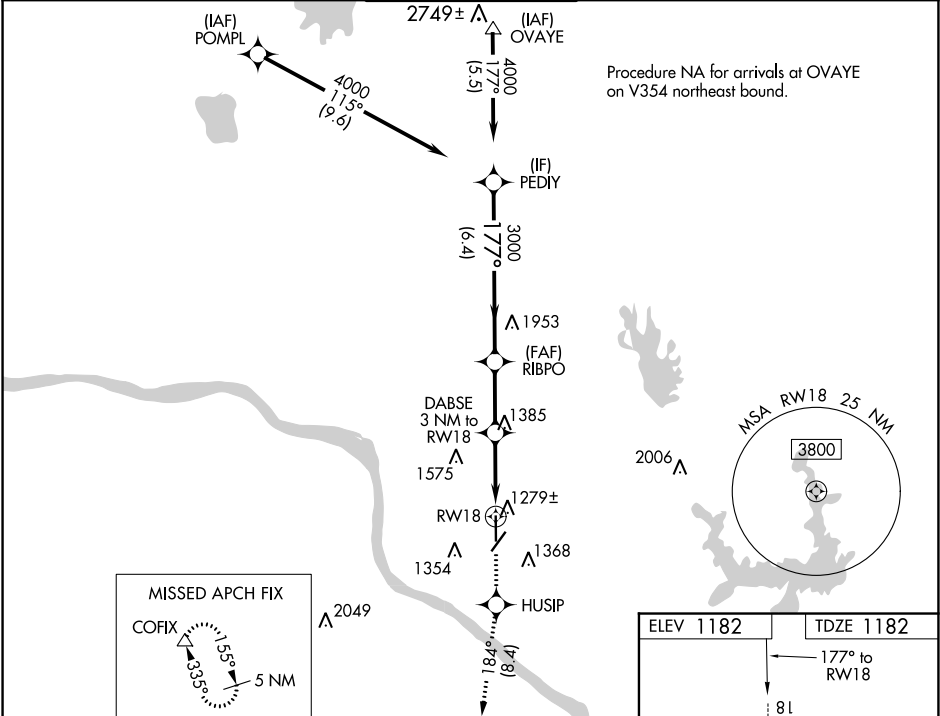
For uncompensated Baro-VNAV systems, LNAV/VNAV NA below -17°C or above 54°C. For inop ALS, increase LNAV/VNAV all Cats visibility to ¾ SM. Circling NA southeast of Rwy 3-21.

MALSR

AS

MISSED APPROACH: Climb to 3000 direct HUSIP and track 184° to COFIX and hold.

AWOS-3 119.55	OKE CITY APP CON 120.45 288.325	WESTHEIMER TOWER★ 118.0 (CTAF) 0	GND CON 121.6	UNICOM 122.95
-------------------------	---	--	-------------------------	-------------------------



VGSI and RNAV glidepath not coincident (VGSI Angle 3.00/TCH 55).

PEDIY

RIBPO

DABSE 3 NM to RW18

HUSIP

COFIX

4000

3000

*2180

RW18

GP 3.00°

TCH 51

6.4 NM

2.6 NM

1.7 NM

1.3 NM

*1.3 NM to RW18

*LNAV only.

CATEGORY	A	B	C	D
LPV DA	1382-½ 200 (200-½)			
LNAV/DA VNAV	1490-½ 308 (400-½)			
LNAV MDA	1640-½ 458 (500-½)	1640-¾ 458 (500-¾)		
CIRCLING	1660-1 478 (500-1)	1940-2¼ 758 (800-2¼)	1940-2½ 758 (800-2½)	

MRL Rwy 3-21 and 18-36

REIL Rwy 36

ELEV 1182

TDZE 1182

177° to RW18

81

5199 X 100

1718 X 100

36

21

AS

AS

AS

AS