

WAAS CH 56627 W19A	APP CRS 187°	Rwy Idg 6502 TDZE 130 Apt Elev 130
--	------------------------	---

RNAV (GPS) RWY 19
HARRELL FIELD (CDH)

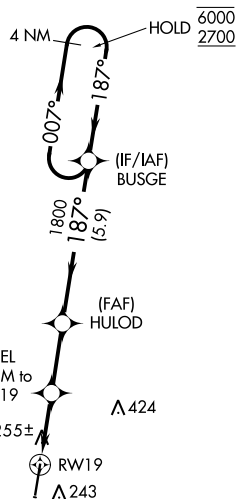
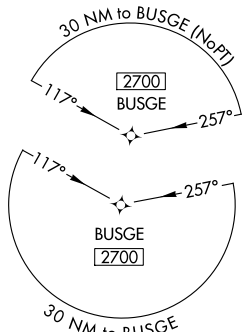
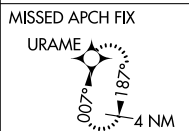
RNP APCH.



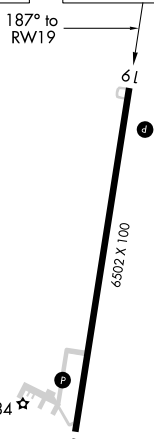
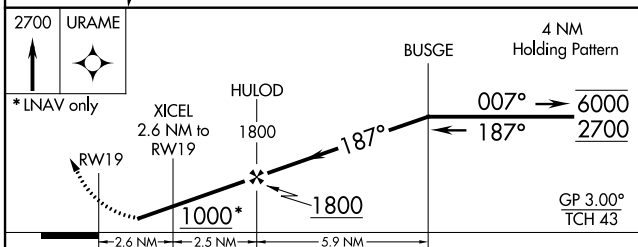
Rwy 19 helicopter visibility reduction below $\frac{3}{4}$ SM NA. Baro-VNAV NA when using El Dorado altimeter setting. For uncompensated Baro-VNAV systems, LNAV/VNAV NA below -15°C or above 54°C. When local altimeter setting not received, use El Dorado altimeter setting and increase all DA/MDA 80 feet, and visibility LPV all Cats $\frac{1}{8}$ SM and LNAV Cats C and D $\frac{1}{4}$ SM.

MISSED APPROACH:
Climb to 2700 direct
URAME and hold.

AWOS-3 125.2	FORT WORTH CENTER 128.2 269.1	UNICOM 122.7 (CTAF) 0
------------------------	---	--

^Λ₇₄₁

ELEV 130		TDZE 130
----------	--	----------

REIL Rwy 1 and 19 L
MIDI Rwy 1 and 19 L

CATEGORY	A	B	C	D
LPV DA	440-1 310 (400-1)			
LNAV/ VNAV DA	426-1 296 (300-1)			
LNAV MDA	520-1 390 (400-1)		520-1½ 390 (400-1½)	
CIRCLING	560-1 430 (500-1)	580-1 450 (500-1)	580-1½ 450 (500-1½)	680-2 550 (600-2)