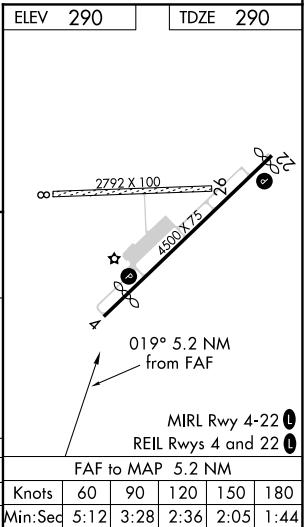
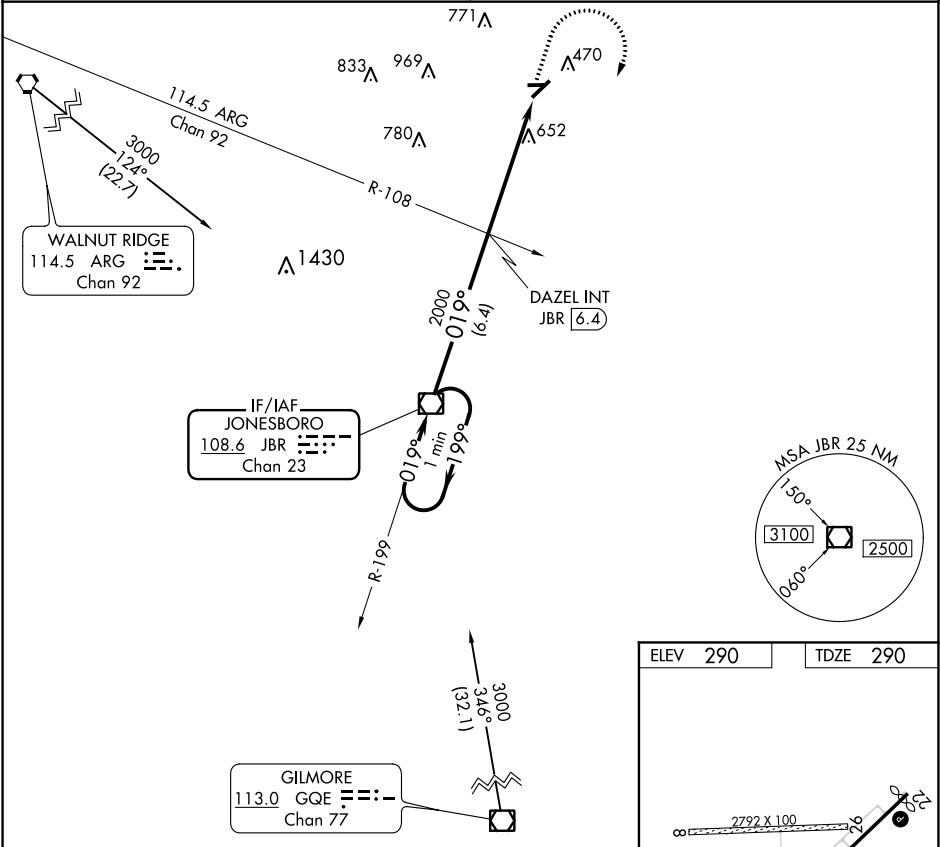


VOR/DME JBR	APP CRS	Rwy Idg	4011
108.6	019°	TDZE	290
Chan 23		Apt Elev	290

VOR RWY 4  
KIRK FIELD (PGR)

▼ ▲ NA	Helicopter visibility reduction below 1 SM NA. Procedure NA at night. Use Jonesboro altimeter setting; when not received, use Walnut Ridge altimeter setting and increase all MDA 20 feet.	MISSED APPROACH: Climb to 1500 then climbing right turn to 3000 direct JBR VOR/DME and hold.
-----------	--	--

MEMPHIS CENTER 120.075 289.4	UNICOM 122.8 (CTAF) 0
---------------------------------	--------------------------



One Minute Holding Pattern	JBR VOR/DME	1500	3000	JBR
3000	019°	019°	019°	019°
VGSI and descent angles not coincident (VGSI Angle 3.00/TCH 18).	DAZEL INT JBR 6.4	JBR 11.7	TCH 40	
6.4 NM	5.2 NM			
CATEGORY	A	B	C	D
S-4	980-1	690 (700-1)	NA	
CIRCLING	980-1	690 (700-1)	NA	

SC-1, 31 DEC 2020 to 28 JAN 2021

SC-1, 31 DEC 2020 to 28 JAN 2021