

WAAS CH 82237 W18A	APP CRS 176°	Rwy Idg 5001 TDZE 1477 Apt Elev 1477
--	------------------------	---

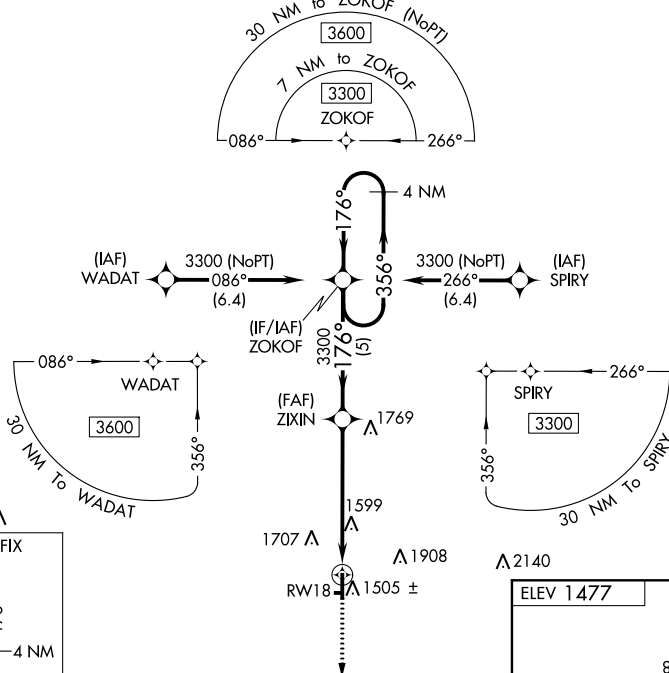

RNAV (GPS) RWY 18
ALVRGNL (AVK)

T For uncompensated Baro-VNAV systems, LNAV/VNAV NA below -17°C (2°F) or above 54°C (130°F). DME/DME RNP-0.3 NA. When local altimeter setting not received, use Vance AFB altimeter setting and increase all DA 127 feet and all MDA 140 feet; increase LPV all Cats and LNAV Cat C visibility $\frac{3}{8}$ mile, LNAV/VNAV all Cats and Circling Cat C visibility $\frac{1}{2}$ mile. Baro-VNAV and VDP NA when using Vance AFB altimeter setting. Helicopter visibility reduction below $\frac{3}{4}$ SM NA.

MISSED APPROACH:
Climb to 3300 direct
HINEN and hold.

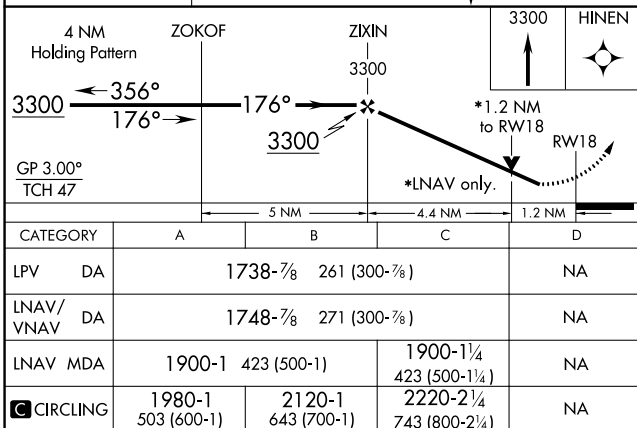
AWOS-3
121.125

VANCE APP CON ★
126.75 346.325

UNICOM
122.8 (CTAF) 

SC-1, 31 DEC 2020 to 28 JAN 2021

SC-1, 31 DEC 2020 to 28 JAN 2021



ALVA, OKLAHOMA
Orig 20AUG15

36°46'N-98°40'W

ALVA RGNL (AVK)
RNAV (GPS) RWY 18