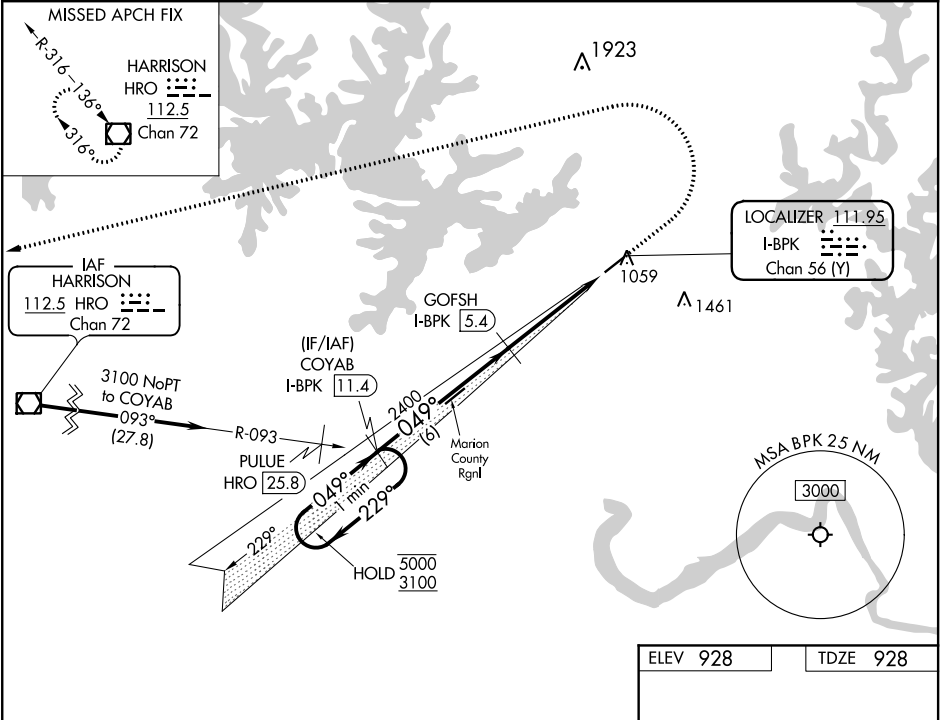


LOC/DME I-BPK 111.95 Chan 56(Y)	APP CRS 049°	Rwy Idg 5000 TDZE 928 Apt Elev 928	ILS or LOC RWY 5 BAXTER COUNTY (BPK)
---	------------------------	---	---

DME required.	MISSED APPROACH: Climb to 1800 then climbing left turn to 3500 direct HRO VOR/DME and hold.
Circling NA for Cat C, southeast of Rwy 5-23. Circling to Rwy 23 NA at night.	

ASOS 133.975	MEMPHIS CENTER 126.85 281.55	GCO 121.72	UNICOM 123.0(CTAF)
------------------------	--	----------------------	------------------------------



VGSI and ILS glidepath not coincident (VGSI Angle 3.00/TCH 38).		1800	3500	HRO
One Minute Holding Pattern		*LOC only.		
COYAB I-BPK 11.4		*I-BPK 1.8		
GOFSH I-BPK 5.4		I-BPK 0.9		
5000 229°		049° 4.5 NM from FAF		
3100 049°		5000 X 75 0.3% UP		
GS 3.00° TCH 44				
6 NM		3.6 NM		
0.9				
CATEGORY	A	B	C	D
S-ILS 5	1178-3/4	250 (300-3/4)		NA
S-LOC 5	1260-1	332 (400-1)		NA
CIRCLING	1380-1 452 (500-1)	1400-1 472 (500-1)	1420-1 1/2 492 (500-1 1/2)	NA
REIL Rwy 5		MIRL Rwy 5-23		