

WAAS CH 77820 W05A	APP CRS 050°	Rwy Idg 6200 TDZE 259 Apt Elev 262
--	------------------------	---

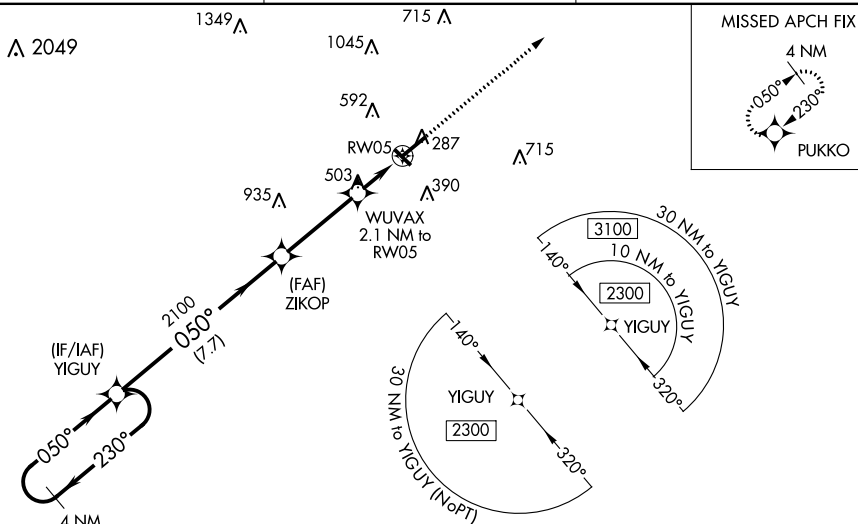
RNAV (GPS) RWY 5
JONESBORO MUNI (JBR)

RNP APCH.

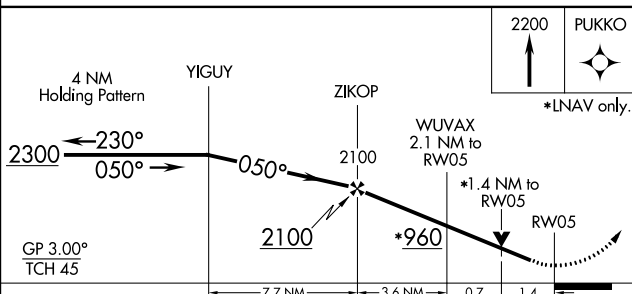
V Circling Rwy 31 NA at night. Baro-VNAV and VDP NA when using Walnut Ridge altimeter setting. For uncompensated Baro-VNAV systems, LNAV/VNAV NA below -12°C or above 54°C. Circling NA northwest of Rwy 5-23. Rwy 5 helicopter visibility reduction below $\frac{3}{4}$ SM NA. When local altimeter setting not received, use Walnut Ridge altimeter setting: increase LPV DA to 593 feet and visibility $\frac{1}{8}$ SM, and LNAV/VNAV DA to 669 feet; increase all MDAs 60 feet and visibility LNAV Cat C/D $\frac{1}{4}$ SM and Circling Cat C $\frac{1}{2}$ SM.

MISSED APPROACH:
Climb to 2200 direct
PUKKO and hold.

ASOS 118.525	MEMPHIS CENTER 120.075 289.4	UNICOM 123.0 (CTAF) 0
------------------------	--	---------------------------------



ELEV 262		TDZE 259
----------	--	----------



CATEGORY	A	B	C	D
LPV DA	539-7/8 280 (300-7/8)			
LNAV/VNAV DA	615-11/8 356 (400-11/8)			
LNAV MDA	760-1 501 (500-1)	760-13/8 501 (500-13/8)		
CIRCLING	760-1 498 (500-1)	760-11/2 498 (500-11/2)		820-2 558 (600-2)

