

WAAS CH <b>65806</b> <b>W23A</b>	APP CRS <b>230°</b>	Rwy Idg <b>6200</b> TDZE <b>262</b> Apt Elev <b>262</b>
--	------------------------	---

RNAV (GPS) RWY 23  
JONESBORO MUNI (JBR)

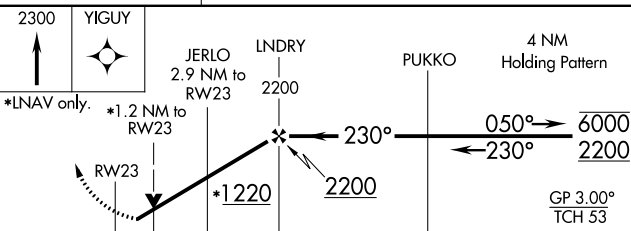
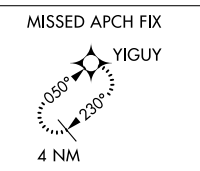
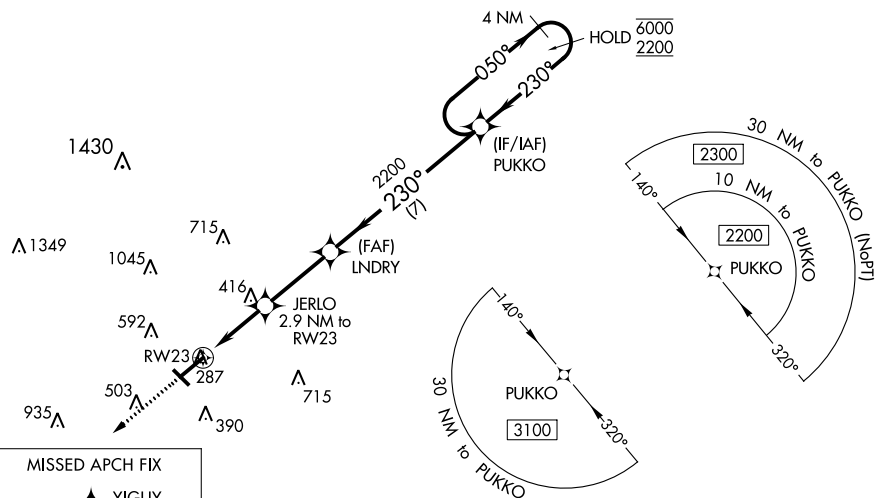
RNP APCH.

**V** Circling NA northwest of Rwy 5-23. Circling Rwy 31 NA at night. Baro-VNAV and VDP NA when using Walnut Ridge altimeter settings. Rwy 23 helicopter visibility reduction below  $\frac{3}{8}$  SM NA. **A** For uncompensated Baro-VNAV systems, LNAV/VNAV NA below -1°C or above 54°C. For inop ALS, increase LPV Cat A/B visibility to  $\frac{1}{8}$  SM. Inop table does not apply to LNAV/VNAV. For inop ALS when using Walnut Ridge altimeter setting, increase LPV Cat A/B visibility to 1 SM. When using Walnut Ridge altimeter setting, inop table does not apply to LNAV/VNAV. When local altimeter setting not received, use Walnut Ridge altimeter setting: increase LPV DA to 600 feet, LNAV/VNAV DA to 630 feet and all visibilities  $\frac{1}{8}$  SM; increase all MDAs 60 feet and visibility LNAV Cat C/D  $\frac{1}{4}$  SM.

ODALS



ASOS <b>118.525</b>	MEMPHIS CENTER <b>120.075 289.4</b>	UNICOM <b>123.0</b> (CTAF) <b>1</b>
------------------------	--	--



		1.2	1.7 NM	3 NM	7 NM		
CATEGORY		A		B	C		D
LPV	DA			546- $\frac{3}{4}$	284 (300- $\frac{3}{4}$ )		
RNAV/ VNAV	DA			576- $\frac{7}{8}$	314 (400- $\frac{7}{8}$ )		
RNAV	MDA	680- $\frac{3}{4}$ 418 (500- $\frac{3}{4}$ )			680-1 418 (500-1)		
CIRCLING		740-1 478 (500-1)			740-1 $\frac{1}{2}$ 478 (500-1 $\frac{1}{2}$ )	820-2 558 (600-2)	

