

WAAS CH 90108 W17A	APP CRS 174°	Rwy Idg 7401 TDZE 1000 Apt Elev 1000
--	------------------------	---

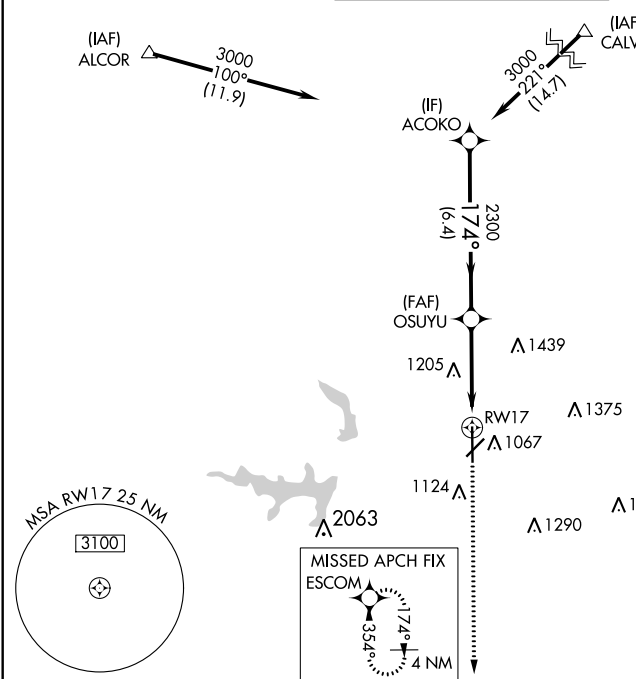
RNAV (GPS) RWY 17
STILLWATER RGNL (SWO)

⚠ When local altimeter setting not received, use Ponca City Rgnl altimeter setting, increase all DA/MDA 80 feet, increase LPV visibility ½ mile all Cats, LNAV/VNAV visibility ½ mile all Cats, LNAV Cats C/D visibility ¼ mile and Circling Cat D visibility ½ mile. VDP and Baro-VNAV NA when using Ponca City Rgnl altimeter setting. Baro-VNAV NA below -17°C (2°F). DME/DME RNP-0.3 NA. For inop MALS, when using Ponca City Rgnl altimeter setting, increase LPV all Cats visibility to 1¼ mile; LNAV/VNAV visibility all Cats to 1¼ mile.

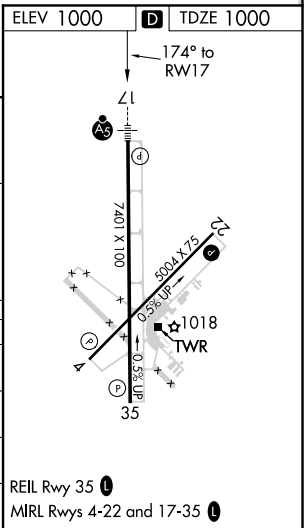
MALS

MISSED APPROACH:
Climb to 3000 direct ESCOM WP and hold.

ASOS 135.725	KANSAS CITY CENTER 127.8 319.1	STILLWATER TOWER ★ 125.35 (CTAF) 0	GND CON 121.6	UNICOM 122.95
------------------------	--	---	-------------------------	-------------------------



Procedure Turn NA				
GP 3.00° TCH 45				
ACOKO 3000 174° OSUYU 2300 RWY 17				
6.4 NM 2.5 NM 1.4 NM				
CATEGORY	A	B	C	D
LPV DA	1250-½ 250 (300-½)			
LNAV/VNAV DA	1420-1 420 (500-1)			
LNAV MDA	1480-½ 480 (500-½)	1480-¾ 480 (500-¾)		1480-1 480 (500-1)
CIRCLING	1480-1 480 (500-1)	1520-2 520 (600-2)		1740-2¼ 740 (800-2¼)



SC-1, 31 DEC 2020 to 28 JAN 2021

SC-1, 31 DEC 2020 to 28 JAN 2021