

WAAS CH 70412 W36A	APP CRS 357°	Rwy Idg 6103 TDZE 995 Apt Elev 1016
--	------------------------	--

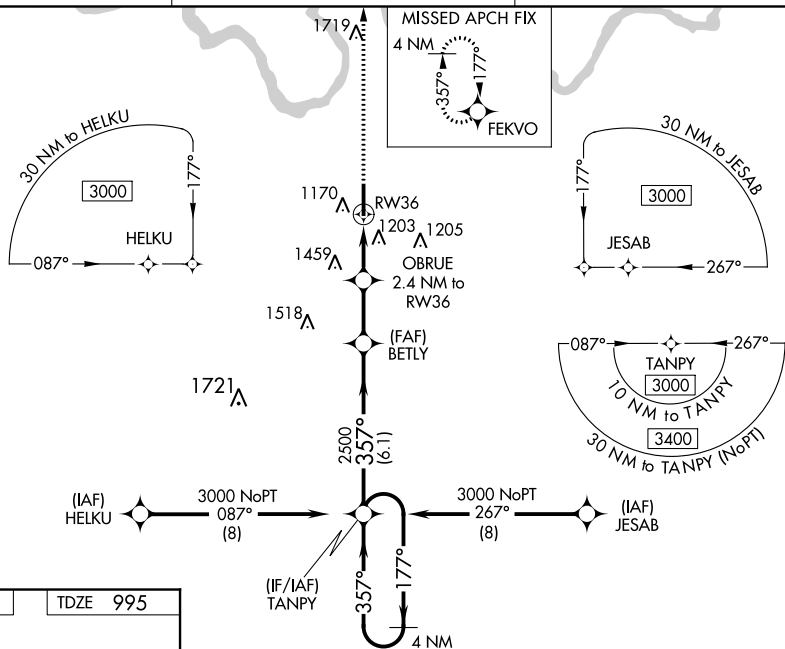
RNAV (GPS) RWY 36
ADA RGNL (ADH)

▼ For uncompensated Baro-VNAV systems, LNAV/VNAV NA below -17°C (2°F) or above 54°C (130°F). Baro-VNAV and VDP NA when using Seminalle altimeter setting.

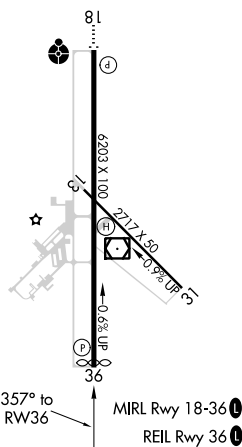
▲ Circling Rwy 31 NA at night. Rwy 36 helicopter visibility reduction below ½ SM NA. DME/DME RNP-0.3 NA. When local altimeter setting not received, use Seminalle altimeter setting: increase LPV DA to 1311 feet, LNAV/VNAV DA to 1600 feet and all MDA 80 feet. Increase LPV all Cots and LNAV Cots C and D visibility ¼ SM, increase LNAV/VNAV all Cots visibility to 2½ SM. Increase Circling Cots C/D visibility ¼ SM.

MISSED APPROACH: Climb to 3000
direct FEKVO and hold.

AWOS-3 118.725	FORT WORTH CENTER 132.2 338.35	UNICOM 122.8 (CTAF) 0
--------------------------	--	---------------------------------



ELEV 1016		TDZE 995
-----------	--	----------



3000
↑
FEKVO

VGS1 and RNAV glidepath not coincident
(VGS1 Angle 3.00/TCH 43).

*LNAV only.

OBRUE
2.4 NM to
RW36

BETLY
2500

TANPY

4 NM
Holding Pattern

177° → 3000
← 357°

1.4 NM to
RW36

RW36

*1780

2500

GP 3.00°
TCH 35°

1.4 NM 1.0 2.3 NM 6.1 NM

CATEGORY	A	B	C	D
LPV DA	1245-7/8		250 (300-7/8)	
RNAV/VNAV DA	1534-17/8		539 (600-17/8)	
RNAV MDA	1460-1	465 (500-1)	1460-1 3/8	465 (500-1 3/8)
CIRCLING	1520-1 504 (600-1)	1640-1 624 (700-1)	1820-2 1/4 804 (900-2 1/4)	1820-2 1/2 804 (900-2 1/2)