

APP CRS  
**182°**

Rwy Idg  
**6161**

TDZE  
**1365**

Apt Elev  
**1365**

RNAV (GPS) RWY 18

BOONE COUNTY (HRO)

RNP APCH.

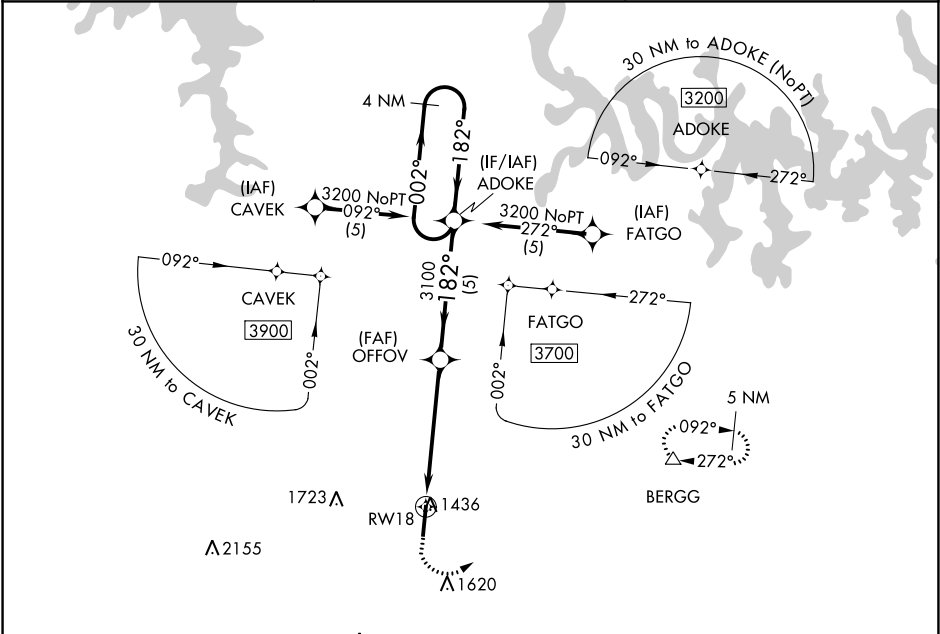
▼

▲

Rwy 18 helicopter visibility reduction below ¾ SM NA.

MISSED APPROACH: Climb to 1800 then climbing left turn to 3200 direct BERGG and hold.

ASOS <b>121.125</b>	MEMPHIS CENTER <b>126.85 281.55</b>	UNICOM <b>123.0 (CTAF) 0</b>
------------------------	--	---------------------------------



ELEV 1365

TDZE 1365

1800

3200

BERGG

VGSI and descent angles not coincident (VGSI Angle 3.00/TCH 50).

4 NM Holding Pattern

OFFOV

ADOKE

3100

3200

182°

002°

182°

1 NM to RWY18

3.00° TCH 54

4.3 NM

5 NM

CATEGORY	A	B	C	D
LNVA MDA	1720-1 355 (400-1)			
CIRCLING	1840-1 475 (500-1)	1860-1 495 (500-1)	2340-3 975 (1000-3)	2560-3 1195 (1200-3)

HIRL Rwy 18-36 0

REIL Rwy 18 0