

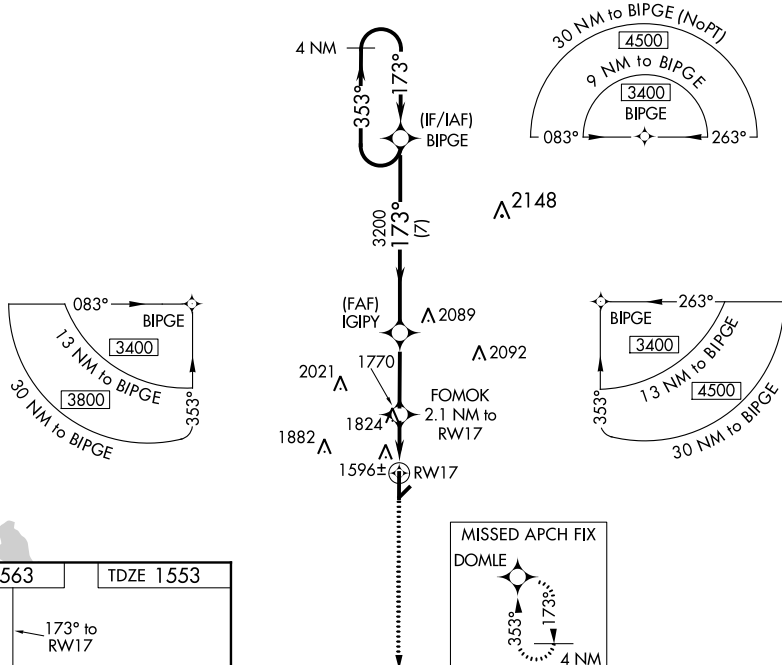
WAAS CH <b>99417</b> <b>W17A</b>	APP CRS <b>173°</b>	Rwy Idg <b>5507</b> TDZE <b>1553</b> Apt Elev <b>1563</b>
--	------------------------	---

RNAV (GPS) RWY 17  
HOBART RGNL (HBR)

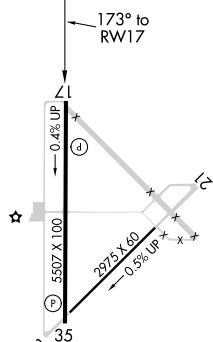
**V** received, use Altus/Quartz Mountain Rgnl altimeter setting and increase all DA 71 feet and all MDA 80 feet, increase LPV and LNAV/VNAV all Cnts, LNAV Cnts C and D and Circling Cat C visibility  $\frac{1}{4}$  mile. Baro-VNAV NA when using Altus/Quartz Mountain altimeter setting. VDP NA with Altus/Quartz Mountain altimeter setting.


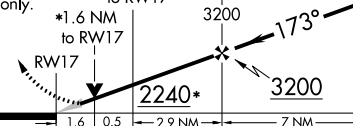
**MISSED APPROACH:** Climb to 4000 direct DOMLE and hold.

ASOS <b>133.325</b>	ALTUS APP CON ★ <b>125.1 353.7</b>	UNICOM <b>122.8</b> (CTAF)
------------------------	---------------------------------------	-------------------------------



ELEV 1563		TDZE 1553
-----------	--	-----------



4000 ↑		DOMLE 		4 NM Holding Pattern	
*NAV only.		FOMOK 2.1 NM to RW17		IGIPY 3200	
		BIPGE		353° → ← 173° 3400	
		2240*		3200	
		GP 3.00° TCH 35			
1.6 0.5		2.9 NM		7 NM	
CATEGORY		A		B	
LPV DA		1803-1		250 (300-1)	
LNAV/ VNAV DA		1900-1¼		347 (400-1¼)	
LNAV MDA		2080-1 527 (600-1)		2080-1½ 527 (600-½)	
CIRCLING		2080-1 517 (600-1)		2080-1½ 517 (600-½)	
				2080-1¾ 527 (600-¾)	
				2120-2 557 (600-2)	