

WAAS CH 40420 W18A	APP CRS 178°	Rwy Idg TDZE Apt Elev	5998 206 206
--	------------------------	-----------------------------	---

RNAV (GPS) RWY 18

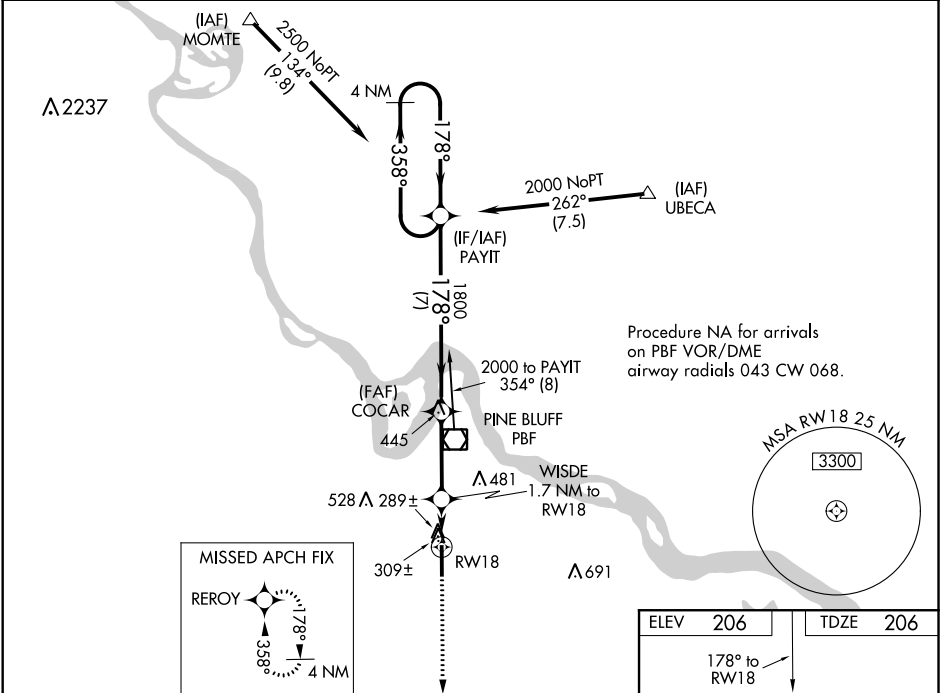
PINE BLUFF RGNL AIRPORT GRIDER FIELD (PBF)

Inoperative table does not apply to LPV. Baro-VNAV and VDP NA when using Stuttgart altimeter setting. For uncompensated Baro-VNAV systems, LNAV/VNAV NA below -15°C (5°F) or above 42°C (107°F). DME/DME RNP-0.3 NA. Rwy 18 helicopter visibility reduction below 3/4 SM NA. When local altimeter setting not received, use Stuttgart altimeter setting and increase all DA 75 feet and all MDA 80 feet; increase LNAV/VNAV all Cats and LNAV Cats C and D visibility 1/4 mile. For inop MALSR increase LNAV Cats A/B visibility to 1 and Cats C/D visibility to 1 1/8. For inop MALSR when using Stuttgart altimeter setting, increase LPV visibility all Cats 1/4 mile, increase LNAV visibility Cats A/B 1/4 mile and Cats C/D 3/8 mile.

MALSR

MISSED APPROACH:
Climb to 2000 direct
REROY and hold.

ASOS 120.775	LITTLE ROCK APP CON 119.85 353.6	CLNC DEL 119.85	UNICOM 123.0 (CTAF) 0
------------------------	--	---------------------------	---------------------------------



2000

REROY

*LNAV only.

CATEGORY	A	B	C	D
LPV DA	459-3/4 253 (300-3/4)			
LNAV/VNAV DA	648-1 442 (500-1)			
LNAV MDA	600-3/4 394 (400-3/4)			
CIRCLING	660-1 454 (500-1)	680-1 474 (500-1)	680-1 1/2 474 (500-1 1/2)	760-2 554 (600-2)

ELEV 206

TDZE 206

178° to RW18

MIRL Rwy 18-36 0

SC-1, 31 DEC 2020 to 28 JAN 2021

SC-1, 31 DEC 2020 to 28 JAN 2021