

VOR/DME BVO 117.9 Chan 126	APP CRS 348°	Rwy Idg 6201 TDZE 711 Apt Elev 711
--	------------------------	---

VOR/DME RWY 35
BARTLESVILLE MUNI (BVO)

▼▲ Circling NA east of Rwy 17-35. When local altimeter setting not received, use Tulsa Intl altimeter setting and increase all MDAs 100 feet and S-35 and Circling Cat C visibility $\frac{1}{4}$ SM. VDP NA when using Tulsa Intl altimeter setting.

MISSED APPROACH: Climb to 2500 direct BVO VOR/DME and hold.

AWOS 132.675	KANSAS CITY CENTER 128.8 354.1	UNICOM 122.825 (CTAF) 0
------------------------	--	--

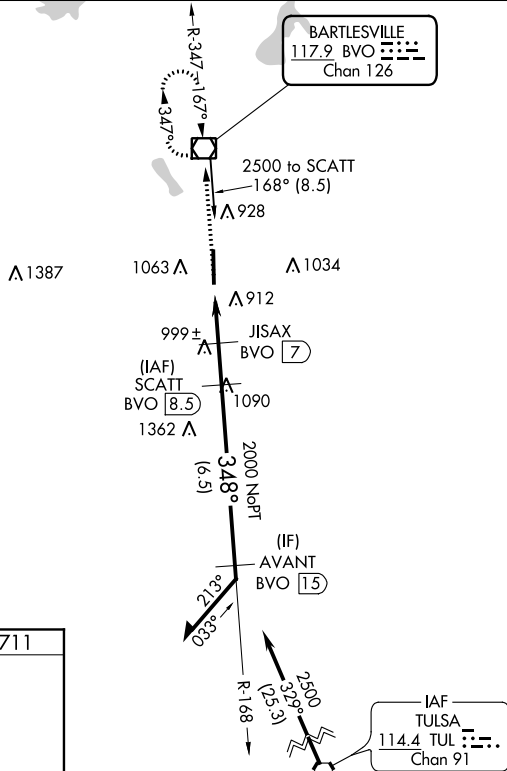
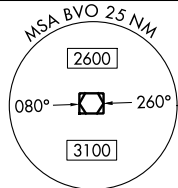


Diagram illustrating a flight path for a circling approach. The path starts at 2500 ft, descends to 1500 ft, then to 1000 ft, and finally to 500 ft. The path is defined by a series of turns with angles of 168°, 348°, and 3.10°. The path is labeled with "SCATT BVO 8.5", "JISAX BVO 7", "BVO 6.5", "BVO 4.7", and "2000". The path is also labeled with "Remain within 10 NM" and "TCH 45".

CATEGORY	A	B	C	D
S-35	1320-1 609 (700-1)		1320-1 ³ / ₄ 609 (700-1 ³ / ₄)	NA
C CIRCLING	1400-1 689 (700-1)		1400-2 689 (700-2)	NA