

▼

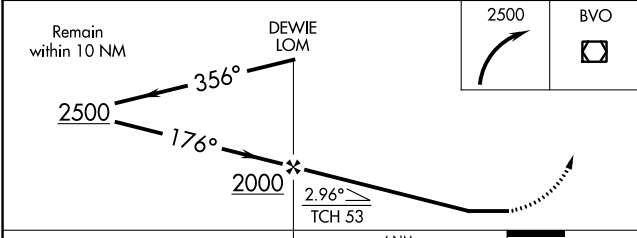
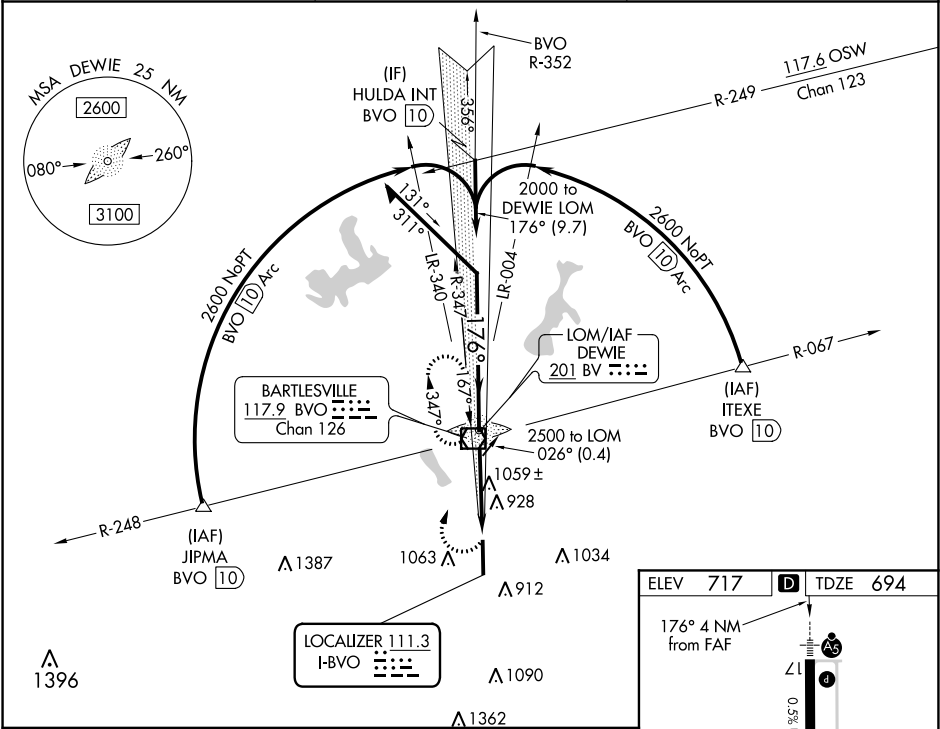
▲ NA

When local altimeter setting not received, use Tulsa Intl altimeter setting and increase all MDA 100 feet, increase S-17 and Circling Cat C visibility ¼ mile. For inop MALSR, increase S-17 Cat A/B visibility to 1 mile and Cat C to 1 ¾ mile. For inop MALSR when using Tulsa Intl altimeter setting, increase S-17 Cat A/B visibility to 1 mile and Cat C to 2 mile. Circling NA east of Rwy 17-35. Helicopter visibility reduction below ¾ SM NA.

MALSR

MISSED APPROACH: Climbing right turn to 2500 direct BVO VOR/DME and hold, continue climb-in-hold to 2500.

AWOS 132.675	KANSAS CITY CENTER 128.8 354.1	UNICOM 122.825 (CTAF) 0
-----------------	-----------------------------------	----------------------------



CATEGORY	A	B	C	D
S-17	1320-¾	626 (700-¾)	1320-1⅜ 626 (700-1⅜)	NA
CIRCLING	1380-1	663 (700-1)	1400-2 683 (700-2)	NA

