

WAAS CH 40217 W35A	APP CRS 355°	Rwy Idg 13503 TDZE 1913 Apt Elev 1922
--	------------------------	--

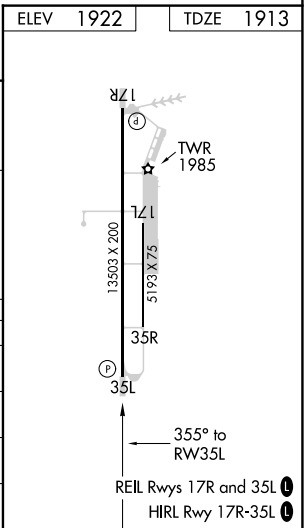
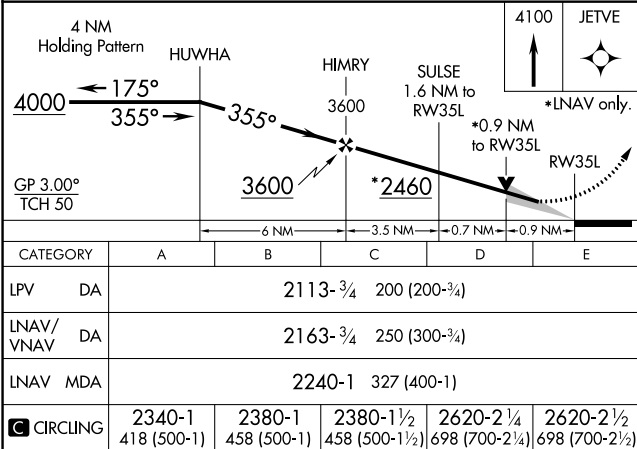
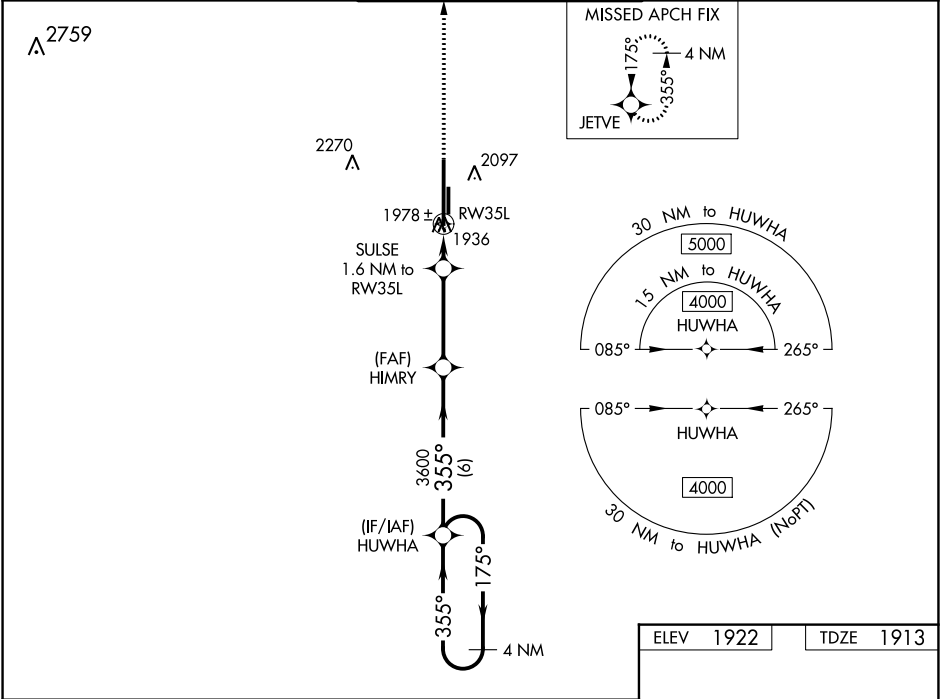
RNAV (GPS) RWY 35L
CLINTON-SHERMAN (CSM)

T For uncompensated Baro-VNAV systems, LNAV/VNAV NA below -12°C (11°F) or above 54°C (130°F). Circling NA east of Rwy 17R-35L. DME/DME RNP-0.3 NA.

A

MISSED APPROACH: Climb to 4100 direct JETVE and hold.

ASOS 118.45	FORT WORTH CENTER 128.4 269.37	CLINTON-SHERMAN TOWER ★ 119.6 (CTAF) 256.9	GND CON 121.7 239.0	UNICOM 122.95
-----------------------	--	--	-------------------------------	-------------------------



SC-1, 31 DEC 2020 to 28 JAN 2021

SC-1, 31 DEC 2020 to 28 JAN 2021