

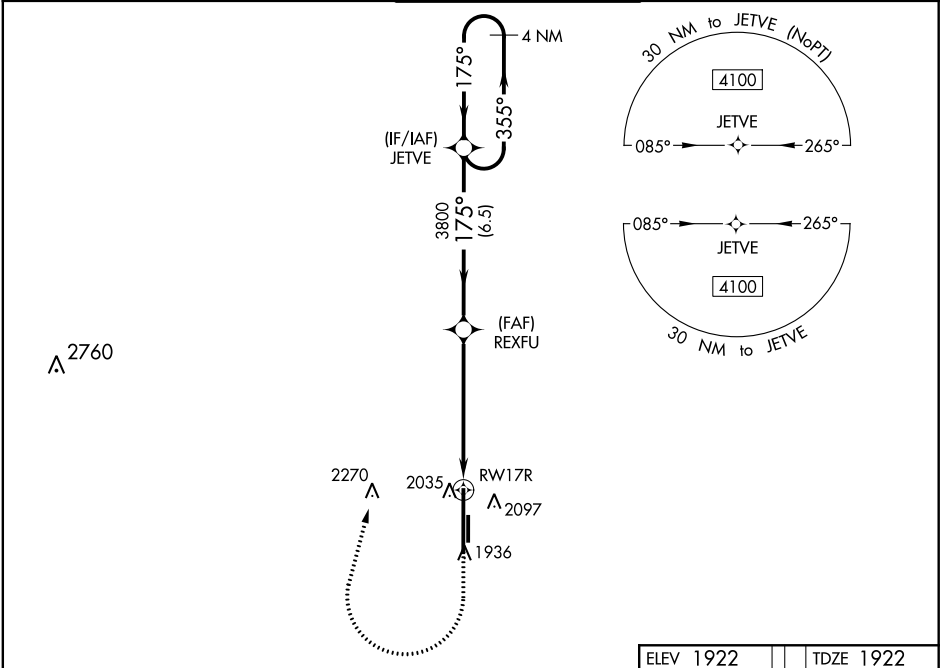
WAAS CH 86717 W17A	APP CRS 175°	Rwy Idg 13503 TDZE 1922 Apt Elev 1922
--	------------------------	--

RNAV (GPS) RWY 17R
CLINTON-SHERMAN (CSM)

▼ For uncompensated Baro-VNAV systems, LNAV/VNAV NA below -12°C (11°F)
▲ or above 54°C (130°F). Circling NA east of Rwy 17R-35L. DME/DME RNP-0.3 NA.

MISSED APPROACH: Climb to 2500 then climbing right turn to 4100 direct JETVE and hold.

ASOS 118.45	FORT WORTH CENTER 128.4 269.37	CLINTON-SHERMAN TOWER ★ 119.6 (CTAF) 0 256.9	GND CON 121.7 239.0	UNICOM 122.95
-----------------------	--	--	-------------------------------	-------------------------



2500 4100 JETVE		ELEV 1922 TDZE 1922				
*LNAV only.		4 NM Holding Pattern				
JETVE		3800 175° 355° 4100				
RWY 17R		3800 175° 3800				
1 NM 4.7 NM 6.5 NM		GP 3.00° TCH 54				
CATEGORY	A	B	C	D	E	
LPV DA	2122-3/4 200 (200-3/4)					
LNAV/VNAV DA	2234-1 312 (400-1)					
LNAV MDA	2300-1 378 (400-1)					
CIRCLING	2340-1 418 (500-1)	2380-1 458 (500-1)	2380-1 1/2 458 (500-1 1/2)	2620-2 1/4 698 (700-2 1/4)	2620-2 1/2 698 (700-2 1/2)	REIL Rwy 17R and 35L 0 HIRL Rwy 17R-35L 0

