

WAAS CH <b>72737</b> <b>W17A</b>	APP CRS <b>175°</b>	Rwy Idg TDZE <b>1291</b> Apt Elev <b>1300</b>
--	------------------------	---

RNAV (GPS) RWY 17L

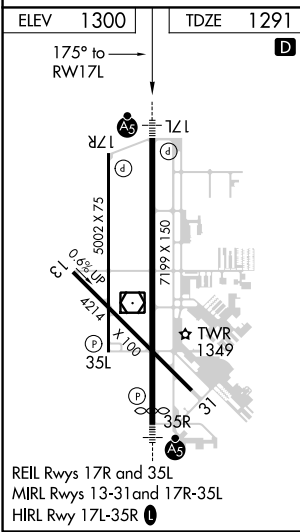
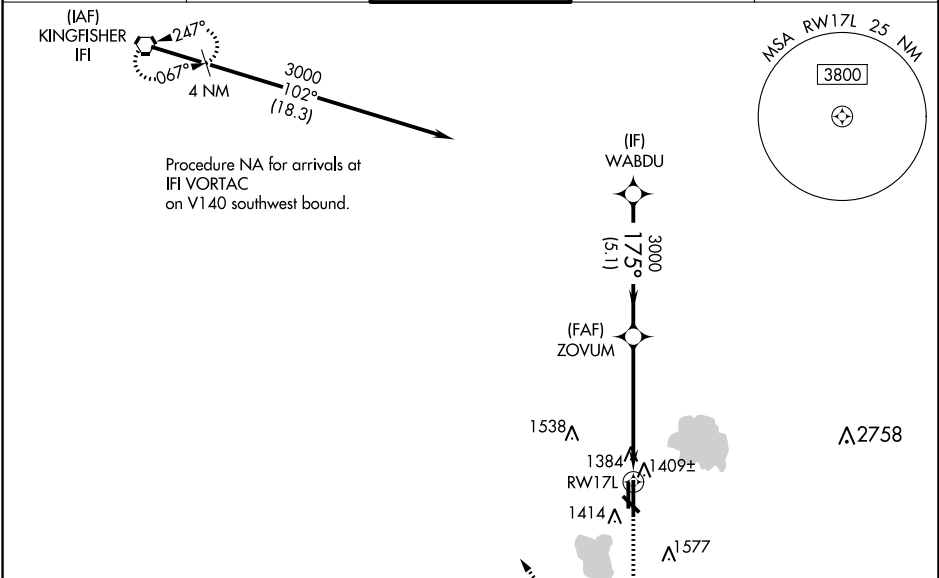
WILEY POST (PWA)




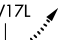
Baro-VNAV NA when using Will Rogers World altimeter setting. For uncompensated Baro-VNAV systems, LNAV/VNAV NA below -13°C (9°F) or above 54°C (130°F). When local altimeter setting not received, use Will Rogers World altimeter setting: Increase all DA 21 feet and all MDA 40 feet. Increase LNAV/VNAV all Cats visibility 1/8 mile and LNAV Cat C/D and Circling Cat C visibility 1/2 mile. DME/DME RNP-0.3 NA. VDP NA when using Will Rogers World altimeter setting.

MALSR

MISSED APPROACH:  
Climb to 1700 then climbing right turn to 3400 direct IFI VORTAC and hold.

ATIS <b>128.725</b>	OKE CITY APP CON <b>124.6 266.8</b>	WILEY POST TOWER ★ <b>126.9 (CTAF) 306.9</b>	GND CON <b>121.7</b>	UNICOM <b>122.95</b>
------------------------	--	---	-------------------------	-------------------------



				A 2046		
VGSI and RNAV glidepath not coincident (VGSI Angle 3.00/TCH 47).				1700 	3400 	IFI 
WABDU				ZOVUM		
3000				3000		
GP 3.00° TCH 54				*LNAV only.		
175°				*1 NM to RW17L		
3000						
5.1 NM				4.2 NM		
				1 NM		
CATEGORY	A	B	C	D		
LPV DA	1491-1/2		200 (200-1/2)			
LNAV/ VNAV DA	1590-1/2		299 (300-1/2)			
LNAV MDA	1660-1/2	369 (400-1/2)	1660-5/8	369 (400-5/8)		
<b>C</b> CIRCLING	1780-1	480 (500-1)	1880-1/2 580 (600-1/2)	1880-2 580 (600-2)		