

LOC/DME I-TFM <b>110.15</b> Chan <b>038</b> (Y)	APP CRS <b>355°</b>	Rwy Idg <b>6844</b> TDZE <b>1299</b> Apt Elev <b>1300</b>
---	------------------------	---

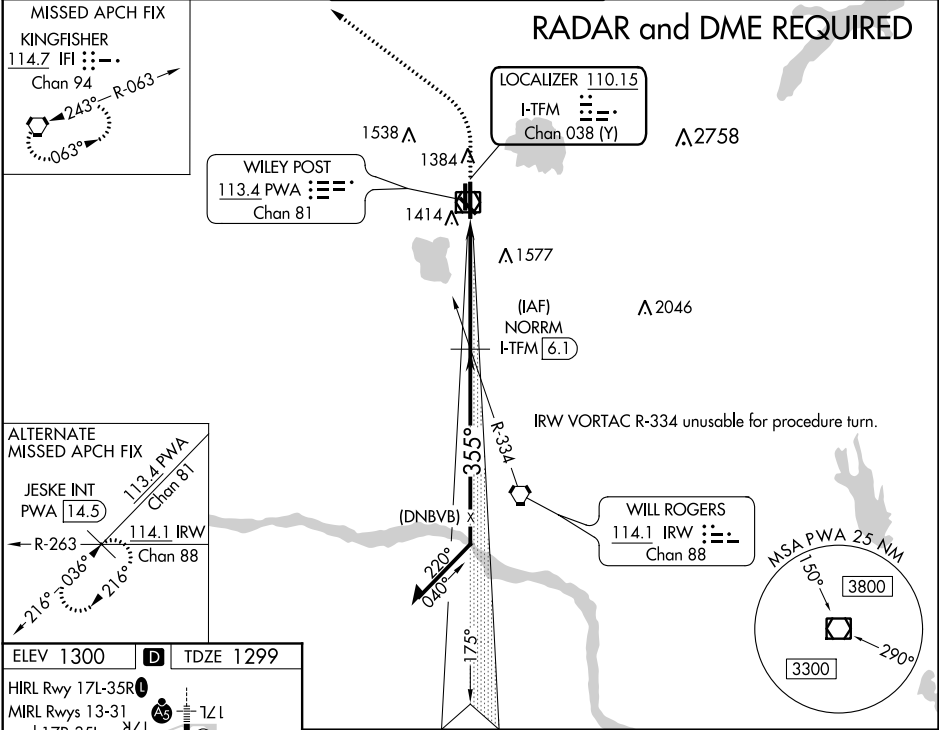
ILS or LOC RWY 35R  
WILEY POST (PWA)

**⚠** When local altimeter setting not received, use Will Rogers World altimeter setting and increase all DA 21 feet and all MDA 40 feet.  
**ASR** VDP NA with Will Rogers World altimeter setting.

**MALSR**

**MISSED APPROACH:** Climb to 1800 then climbing left turn to 3300 direct IFI VORTAC and hold.

ATIS <b>128.725</b>	OKE CITY APP CON <b>124.6 266.8</b>	WILEY POST TOWER ★ <b>126.9</b> (CTAF) <b>0 306.9</b>	GND CON <b>121.7</b>	UNICOM <b>122.95</b>
------------------------	--	--	-------------------------	-------------------------



ELEV 1300 **D** TDZE 1299

HIRL Rwy 17L-35R

MIRL Rwy 13-31

and 17R-35L

REIL Rwy 17R and 35L

FAF to MAP 4.8 NM

Knots	60	90	120	150	180
Min:Sec	4:48	3:12	2:24	1:55	1:36

1800 3300 IFI

**\*LOC only.**

**\*I-TFM 2.5**

**I-TFM 1.3**

**NORRM I-TFM 6.1**

**2900 175° 2900 355° 2900**

**Remain within 10 NM**

**GS 3.00°**

**Use I-TFM DME when on the localizer course. TCH 50**

1.2 3.6 NM

CATEGORY	A	B	C	D
S-ILS 35R	1499-½		200 (200-½)	
S-LOC 35R	1740-½ 441 (500-½)		1740-¾ 441 (500-¾)	1740-1 441 (500-1)
<b>C</b> CIRCLING	1780-1 480 (500-1)		1880-1½ 580 (600-1½)	1880-2 580 (600-2)

SC-1, 31 DEC 2020 to 28 JAN 2021

SC-1, 31 DEC 2020 to 28 JAN 2021