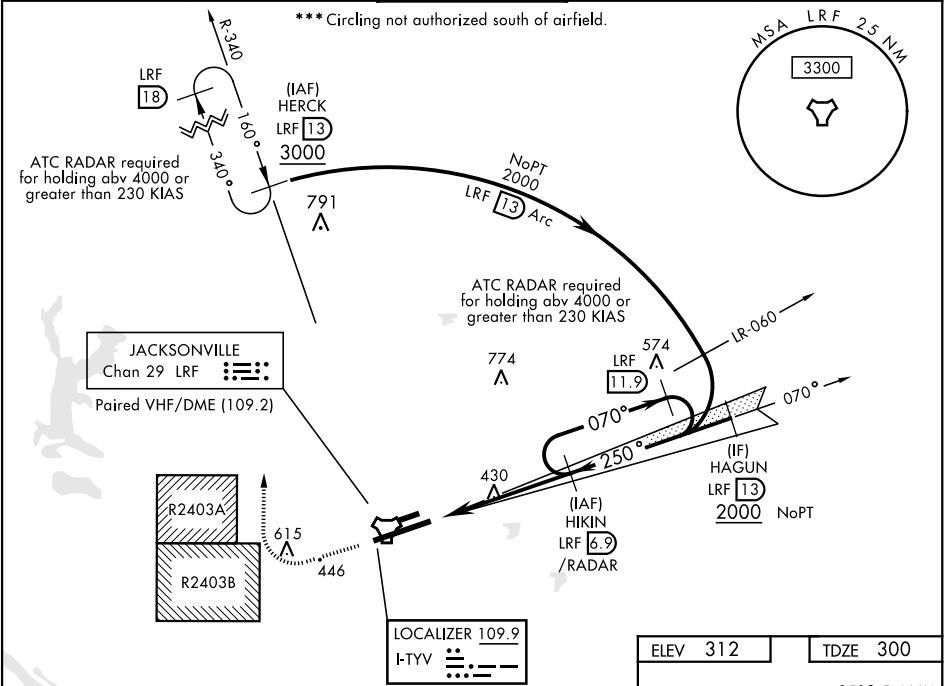


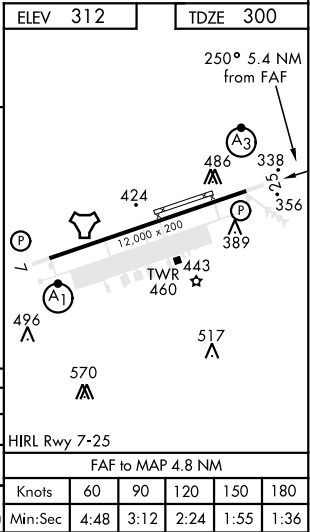
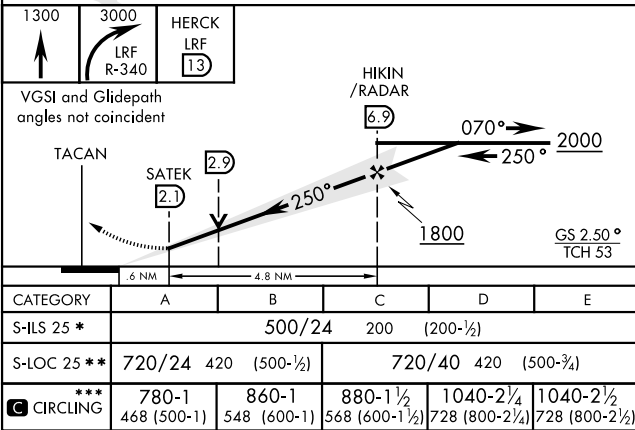
ILS or LOC RWY 25

LOC I-TYV <b>109.9</b>	APCH CRS <b>250°</b>	Rwy Ldg <b>12,000</b> TDZE <b>300</b> Arpt Elev <b>312</b>	AL-738 [USAF]	LITTLE ROCK AFB (KLRF)
RADAR or DME required. RADAR required when R-2403A / R2403B active.			SSALR 	MISSED APPROACH: Climb to 3000 then turn right climbing to 3000, intercept LRF TACAN R-340 to 13 DME (HERCK) and hold.
▼ * When ALS inop, increase RVR to 40 and vis to ¾ mile. ** When ALS inop, increase CAT AB RVR to 55, vis to 1 mile; CAT CDE vis to 1¼ miles.				

ATIS ★ <b>119.175 251.1</b>	LITTLE ROCK APP CON <b>119.5 306.2</b>	LITTLE ROCK TOWER <b>120.6 269.075</b>	GND CON <b>132.8 275.8</b>	CLNC DEL <b>253.5</b>
--------------------------------	---	---	-------------------------------	--------------------------



EMERG SAFE ALT 100 NM 4100



ILS or LOC RWY 25