

| | | |
|--|------------------------|---|
| WAAS CH 50330 W34A | APP CRS 347° | Rwy Idg TDZE 1241 Apt Elev 1252 |
|--|------------------------|---|

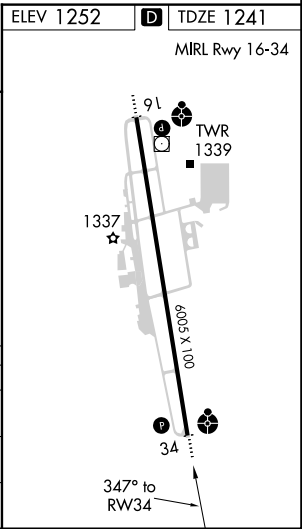
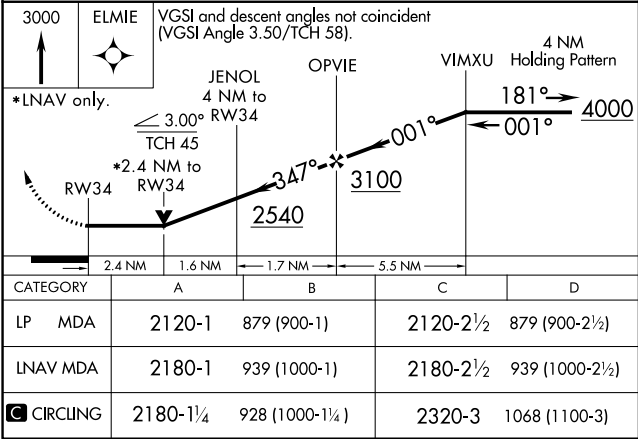
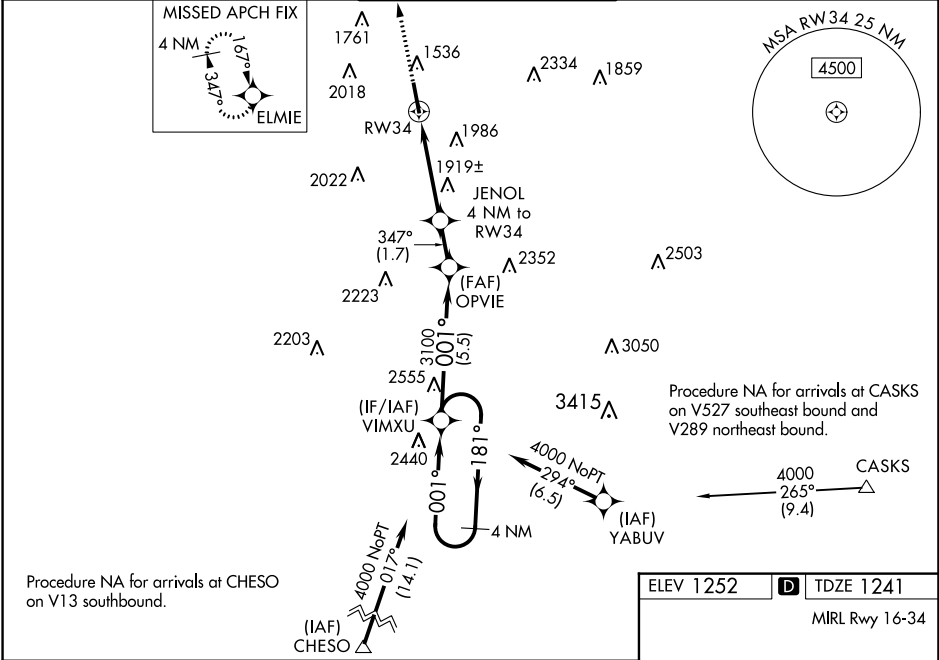
RNAV (GPS) RWY 34
DRAKE FIELD (FYV)

⚠ Inop table does not apply to LP Cat A and and LP/LNAV Cat C and D. For inop ODALS when using Springdale altimeter setting, increase LNAV Cat C and D visibility to 3 miles. Circling NA east of Rwy 16-34. DME/DME RNP-0.3 NA. Helicopter visibility reduction below ¾ SM NA. VDP NA with Springdale altimeter setting. When local altimeter setting not received, use Springdale altimeter setting and increase all MDA 40 feet. Increase LNAV Cat B and Circling Cat B and C visibility ¼ mile.

ODALS

MISSED APPROACH:
Climb to 3000 direct ELMIE and hold.

| | | | | |
|------------------------|--|--|-------------------------|-------------------------|
| ATIS 119.575 | RAZORBACK APP CON★ 121.0 244.575 | DRAKE TOWER★ 128.0(CTAF) 371.9 | GND CON 121.8 | UNICOM 122.95 |
|------------------------|--|--|-------------------------|-------------------------|



SC-1, 31 DEC 2020 to 28 JAN 2021

SC-1, 31 DEC 2020 to 28 JAN 2021