

WAAS CH <b>42630</b> <b>W16A</b>	APP CRS <b>167°</b>	Rwy Idg TDZE Apt Elev	<b>6005</b> <b>1252</b> <b>1252</b>
--	------------------------	-----------------------------	---

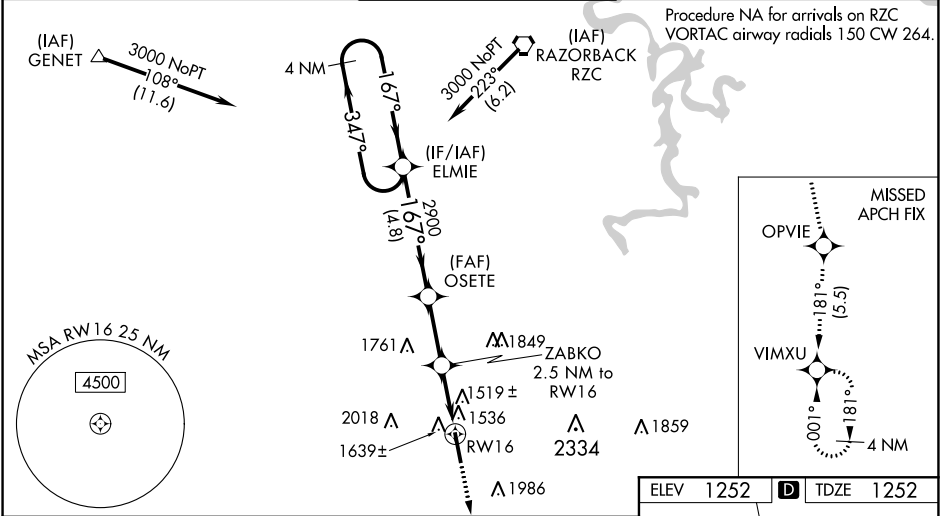
RNAV (GPS) RWY 16  
DRAKE FIELD (F'YV)

**⚠** Baro-VNAV NA when using Springdale altimeter setting. For uncompensated Baro-VNAV systems, LNAV/VNAV NA below -17°C (2°F) or above 54°C (130°F). When VGSI inop, Straight-in/Circling Rwy 16 procedure NA at night. Circling NA east of Rwy 16-34. DME/DME RNP-0.3 NA. Visibility reduction by helicopters NA. When local altimeter setting not received, use Springdale altimeter setting and increase all DA and MDA 40 feet. Increase LPV all Cats visibility  $\frac{3}{8}$  mile and LNAV Cats C and D visibility  $\frac{1}{8}$  mile and LNAV/VNAV all Cats visibility  $\frac{3}{8}$  mile. For inop ODALS, increase LPV all Cats visibility  $\frac{1}{8}$  mile, LNAV/VNAV all Cats visibility  $\frac{3}{8}$  mile and LNAV Cats C and D visibility  $\frac{1}{4}$  mile. For inop ODALS, when using Springdale altimeter setting, increase LPV all Cats visibility to  $\frac{1}{8}$  miles and LNAV Cats C and D visibility to 2 miles. Inop table does not apply when using Springdale altimeter setting to LNAV/VNAV all Cats and LNAV Cats A and B.

ODALS

MISSED APPROACH:  
Climb to 4000 direct OPVIE and on track 181° to VIMXU and hold.

ATIS <b>119.575</b>	RAZORBACK APP CON★ <b>121.0 244.575</b>	DRAKE TOWER★ <b>128.0 (CTAF) 371.9</b>	GND CON <b>121.8</b>	UNICOM <b>122.95</b>
------------------------	--	---	-------------------------	-------------------------



4 NM Holding Pattern

GP 3.00° TCH 50

4000 OPVIE

OSETE

ZABKO 2.5 NM to RW16

RW16

\*LNAV only.

\*2080

4 NM

OPVIE

VIMXU

tr 181°

CATEGORY	A	B	C	D
LPV DA		1714-1 $\frac{3}{8}$	462 (500-1 $\frac{3}{8}$ )	
LNAV/VNAV DA		1856-1 $\frac{7}{8}$	604 (700-1 $\frac{7}{8}$ )	
LNAV MDA	1900-1	648 (700-1)	1900-1 $\frac{3}{4}$	648 (700-1 $\frac{3}{4}$ )
<b>C</b> CIRCLING	2000-1	748 (800-1)	2320-3	1068 (1100-3)

ELEV 1252 **D** TDZE 1252

MIRL Rwy 16-34

SC-1, 31 DEC 2020 to 28 JAN 2021

SC-1, 31 DEC 2020 to 28 JAN 2021