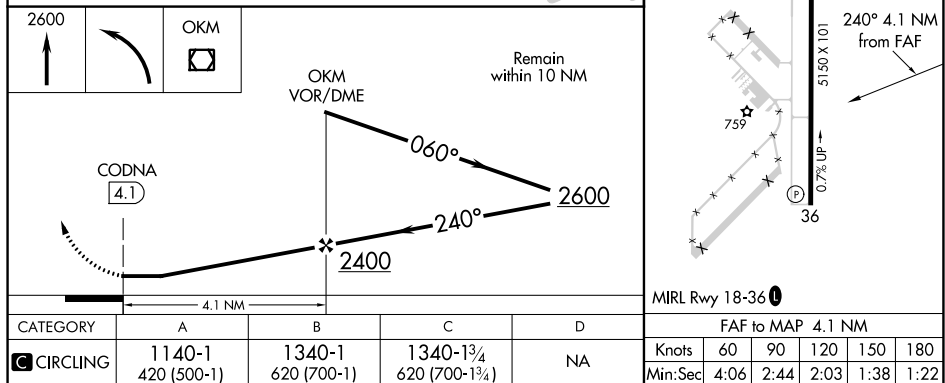
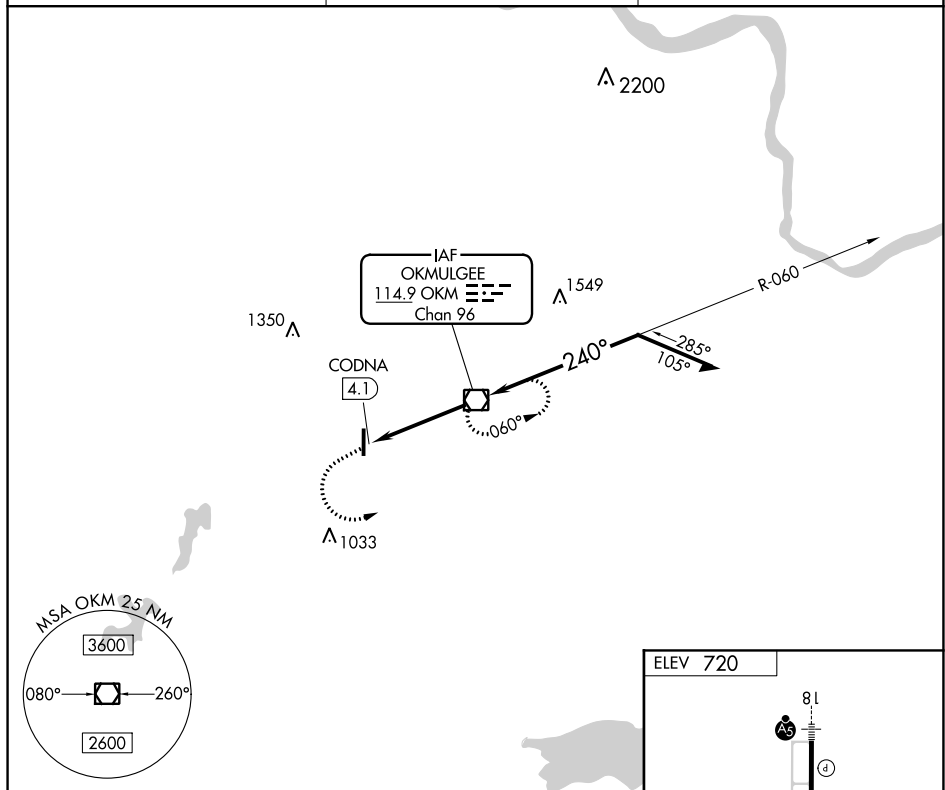


VOR-A
OKMULGEE RGNL (OKM)

MISSED APPROACH: Climb to 2600 then left turn direct OKM VOR/DME and hold.

AWOS-3 118.225	TULSA APP CON 119.85 338.3	UNICOM 123.0 (CTAF) 0
--------------------------	--------------------------------------	---------------------------------



OKMULGEE RGNL (OKM)

VOR-A

SC-1, 31 DEC 2020 to 28 JAN 2021