

LOC I-FSM <u>111.3</u>	APP CRS 256°	Rwy Idg 8017 TDZE 453 Apt Elev 469
----------------------------------	------------------------	---

ILS or LOC RWY 25
FORT SMITH RGNL (FSM)

DME required.

ASR Circling NA for Cat E when R-2401B active. Circling NA for Cat E NW of Rwy 7 and 19. For inop ALS, increase S-ILS 25 Cat E visibility to RVR 4000 and S-LOC 25 Cat C/D/E to 1/8 SM.
* RVR 1800 authorized with the use of FD or AP or HUD to DA.

MALS



MISSED APPROACH: Climb to 1400 then climbing left turn to 4000 on heading 220° and FSM VORTAC R-232 to SPIRO/FSM 15 DME and hold, continue climb-in-hold to 4000.

ATIS 126.3	RAZORBACK APP CON★ 120.9 343.75	FORT SMITH TOWER★ 118.3(CTAF) 0 323.175	GND CON 121.9 275.8	CLNC DEL 133.85 278.3	UNICOM 122.95
---------------	------------------------------------	--	------------------------	--------------------------	------------------

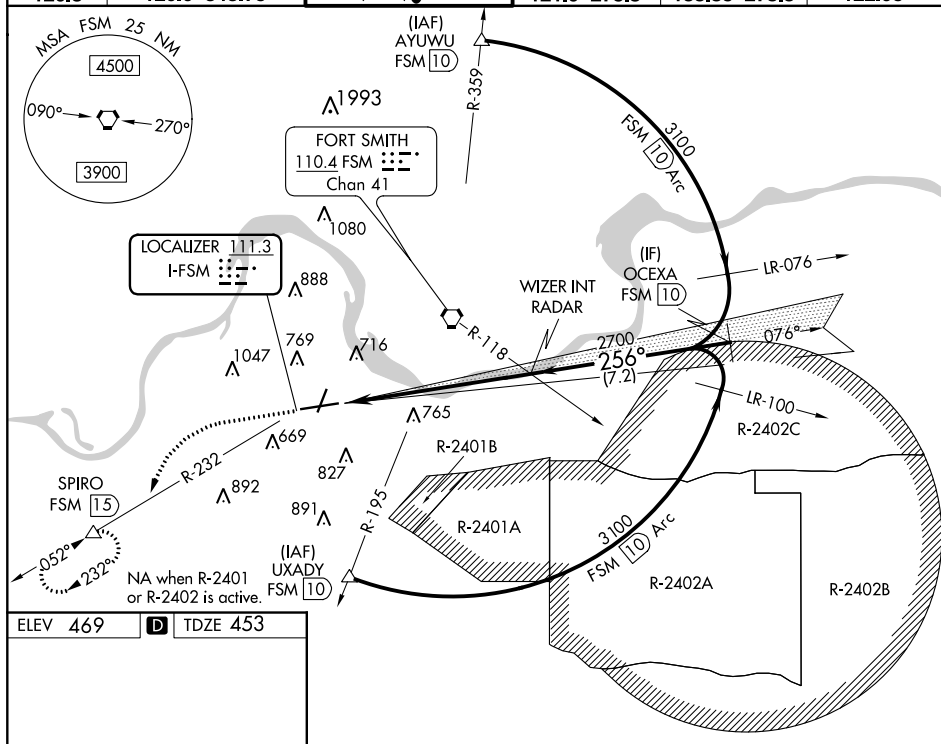


Diagram illustrating a 3D runway layout with a 256° 7 NM from FAF, a 0.5% DOWN slope, a 8017 x 150 area, and a TWIR 531 area. The diagram shows a runway with a 0.5% DOWN slope, a 8017 x 150 area, and a TWIR 531 area. The runway is labeled with 'AF' and '256° 7 NM from FAF'. The diagram also shows a 3D perspective of the runway with a 0.5% DOWN slope, a 8017 x 150 area, and a TWIR 531 area.

FAF to MAP 7 NM					
Knots	60	90	120	150	180
Min:Sec	7:00	4:40	3:30	2:48	2:20

