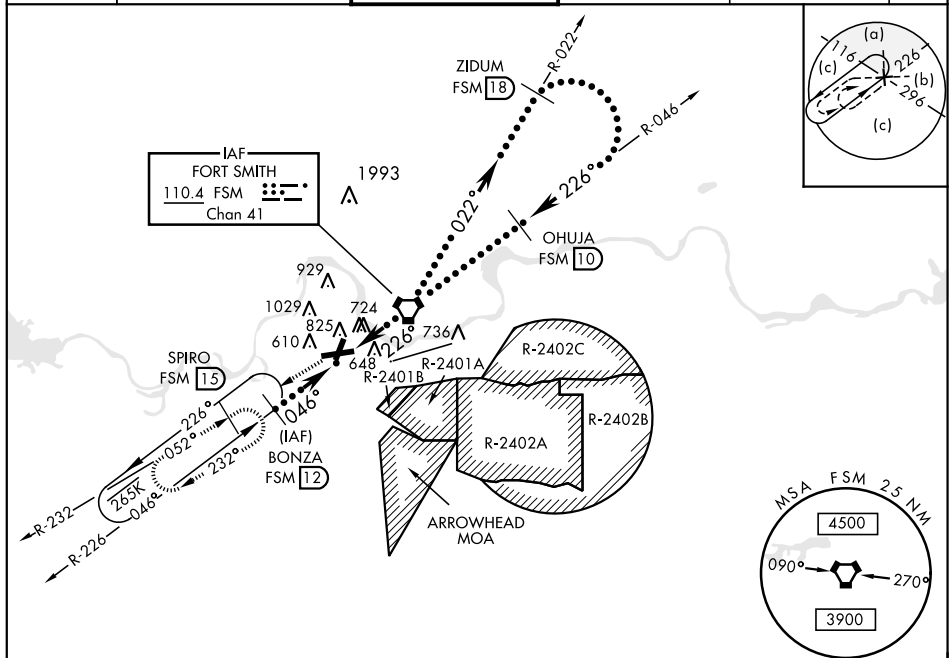


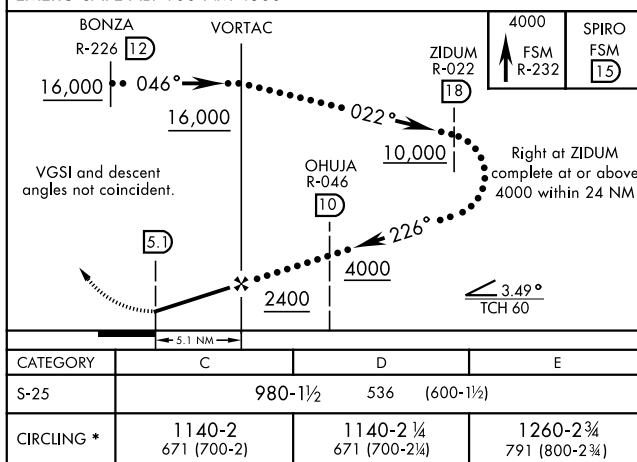
FORT SMITH, ARKANSAS

HI-VOR/DME or TACAN RWY 25

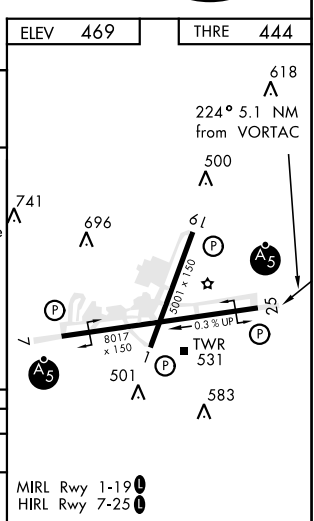
| | | | | | |
|--|--|---|-------------------------------|--|-----|
| VORTAC FSM 110.4 Chan 41 | APCH CRS 226° | Rwy Idg THRE 444 Arpt Elev 469 | JAL-631 [USAF] | FORT SMITH REGIONAL (KFMS) | |
| V * Circling NA NW Rwy 7 and 19 for CAT E. Circling NA for CAT E when R-2401B is active. Circling to Rwy 1 NA at night. | | | MALSR | MISSED APPROACH: Climb to 4000 on FSM VORTAC R-232 to SPIRO (FSM R-232/15 DME) and hold, continue climb in hold to 4000. | |
| ATIS ★ 126.3 | RAZORBACK APP CON 120.9 343.75 | FORT SMITH TOWER ★ 118.3 (CTAF) 0 323.175 | GND CON 121.9 275.8 | CLNC DEL 133.85 278.3 | ASR |



EMERG SAFE ALT 100 NM 4500



| CATEGORY | C | D | E |
|------------|-----------------------|--------------------------|--------------------------|
| S-25 | 980-1½ | 536 (600-1½) | |
| CIRCLING * | 1140-2 671 (700-2) | 1140-2 ¼ 671 (700-2¼) | 1260-2 ¾ 791 (800-2¾) |



FORT SMITH, ARKANSAS

35°20'N-94°22'W

FORT SMITH REGIONAL (KFMS)

Amdt 8 16035

HI-VOR/DME or TACAN RWY 25

SC-1, 31 DEC 2020 to 28 JAN 2021