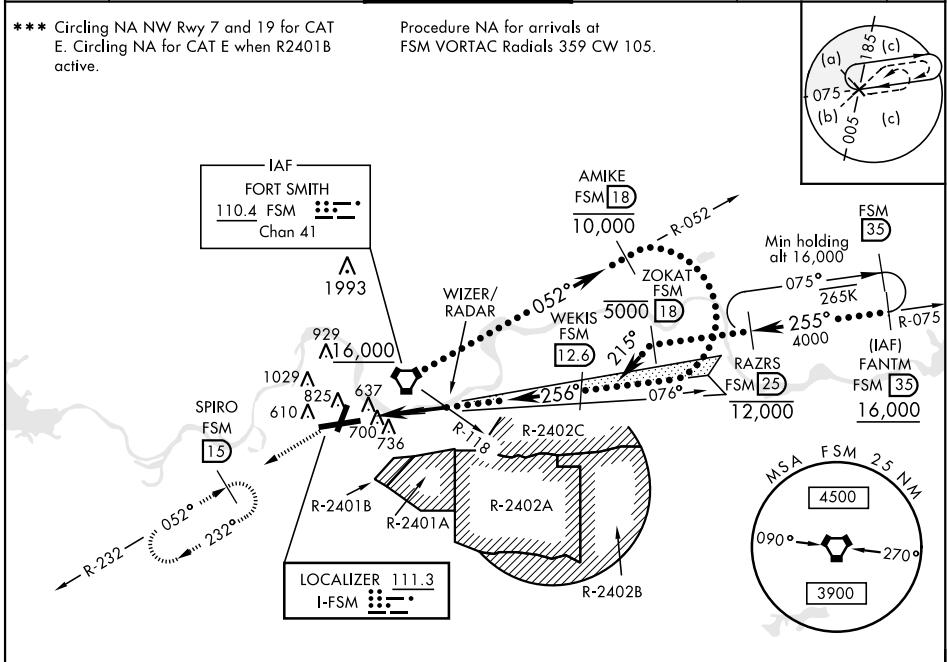


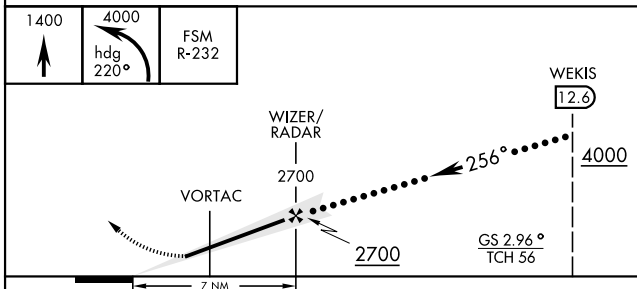
HI-ILS or LOC RWY 25

LOC I-FSM <u>111.3</u>	APCH CRS 256°	Rwy Idg 8017 TDZE 453 Arprt Elev 469	JAL-631 [USAF]	FORT SMITH REGIONAL (KFSM)		
<div>V * When ALS inop, increase CAT E RVR to 40. ** When ALS inop, increase CAT CDE vis to 1½ miles.</div> <div>A NA when control tower closed.</div>			MALSR 	MISSED APPROACH: Climb to 1400 then climbing left turn to 4000 via heading 220° and FSM VORTAC R-232 to SPIRO (1.5 DME) and hold, continue climb in hold to 4000.		
ATIS ★ 126.3	RAZORBACK APP CON 120.9 343.75		FORT SMITH TOWER ★ 118.3 (CTAF) 0 323.175	GND CON 121.9 275.8	CLNC DEL 133.85 278.3	ASR

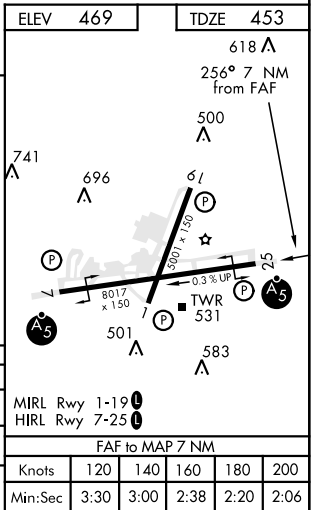


DME REQUIRED

EMERG SAFE ALT 100 NM 4500 FROM FSM VORTAC



CATEGORY	C	D	E
S-ILS *	653/24	200	(200-½)
S-LOC **	1020-1¼	567	(600-1¼)
*** CIRCLING	1400-2¾ 931 (1000-2¾)	1400-3	931 (1000-3)



HI-ILS or LOC RWY 25