

WAAS CH 86919 W17A	APP CRS 174°	Rwy Idg TDZE Apt Elev	5997 1073 1073
--	------------------------	-----------------------------	---

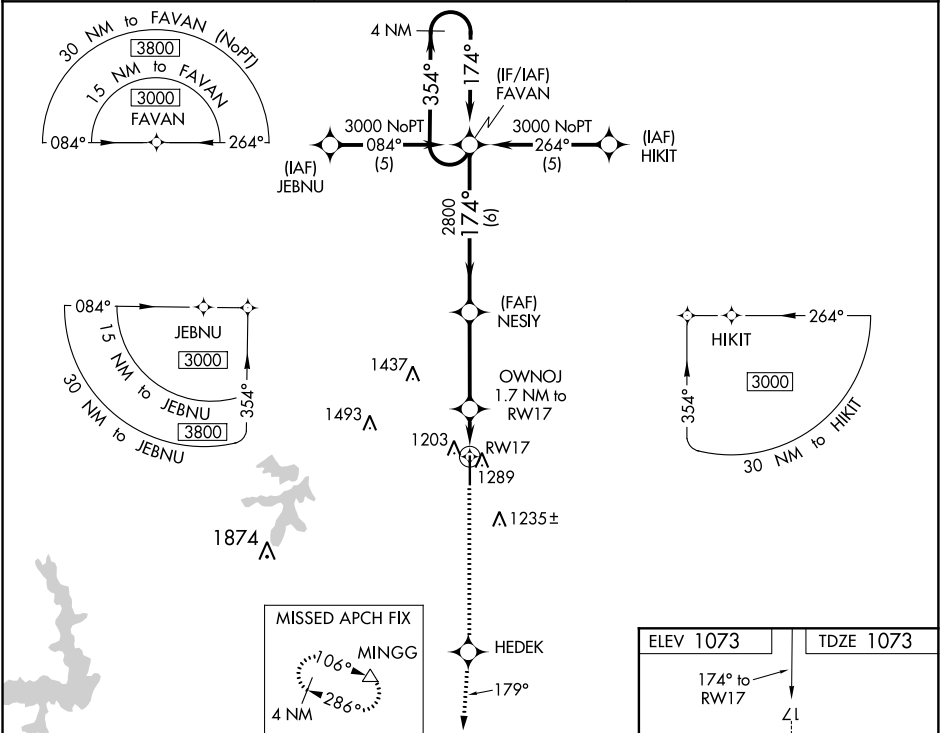
RNAV (GPS) RWY 17
SHAWNEE RGNL (SNL)

▼ Baro-VNAV NA when using Seminole altimeter setting. For uncompensated Baro-VNAV systems, LNAV/VNAV NA below -17°C (2°F) or above 54°C (130°F).
▲ DME/DME RNP-0.3 NA. When local altimeter setting not received, use Seminole altimeter setting: increase LPV DA to 1313 feet; increase LNAV/VNAV DA to 1487 feet and visibility ¼ SM; increase all MDAs 40 feet and visibility Cat C ¼ SM.

MALSR

MISSED APPROACH: Climb to 4000 direct HEDEK and on track 179° to MINGG and hold.

AWOS-3 118.275	OKE CITY APP CON 120.45 288.325	UNICOM 122.7 (CTAF)
--------------------------	---	-------------------------------



4000 HEDEK

MINGG

ir 179°

VGSI and RNAV glidepath not coincident (VGSI Angle 3.00/TCH 52).

4 NM Holding Pattern

*LNAV only.

OWNOJ 1.7 NM to RW17

RW17

GP 3.00° TCH 58

1660

2800

3000

174°

354°

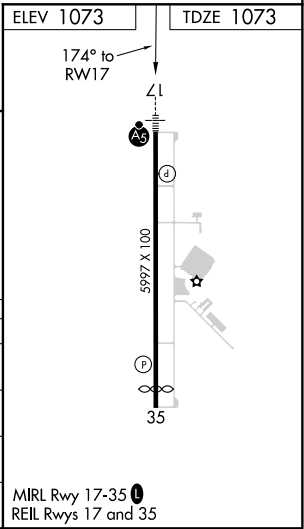
174°

1.7

3.5 NM

6 NM

CATEGORY	A	B	C	D
LPV DA	1273-½	200 (200-½)		NA
LNAV/VNAV DA	1447-¾	374 (400-¾)		NA
LNAV MDA	1540-½	467 (500-½)	1540-¾ 467 (500-¾)	NA
CIRCLING	1600-1	527 (600-1)	1640-1½ 567 (600-1½)	NA



SC-1, 31 DEC 2020 to 28 JAN 2021

SC-1, 31 DEC 2020 to 28 JAN 2021