

ALTUS, OKLAHOMA

VOR or TACAN RWY 35L

VORTAC LTS <b>109.8</b> Chan <b>35</b>	APCH CRS <b>360°</b>	Rwy Idg <b>13,440</b> TDZE <b>1354</b> Arpt Elev <b>1382</b>
--	-------------------------	--

AL-482 [USAF]

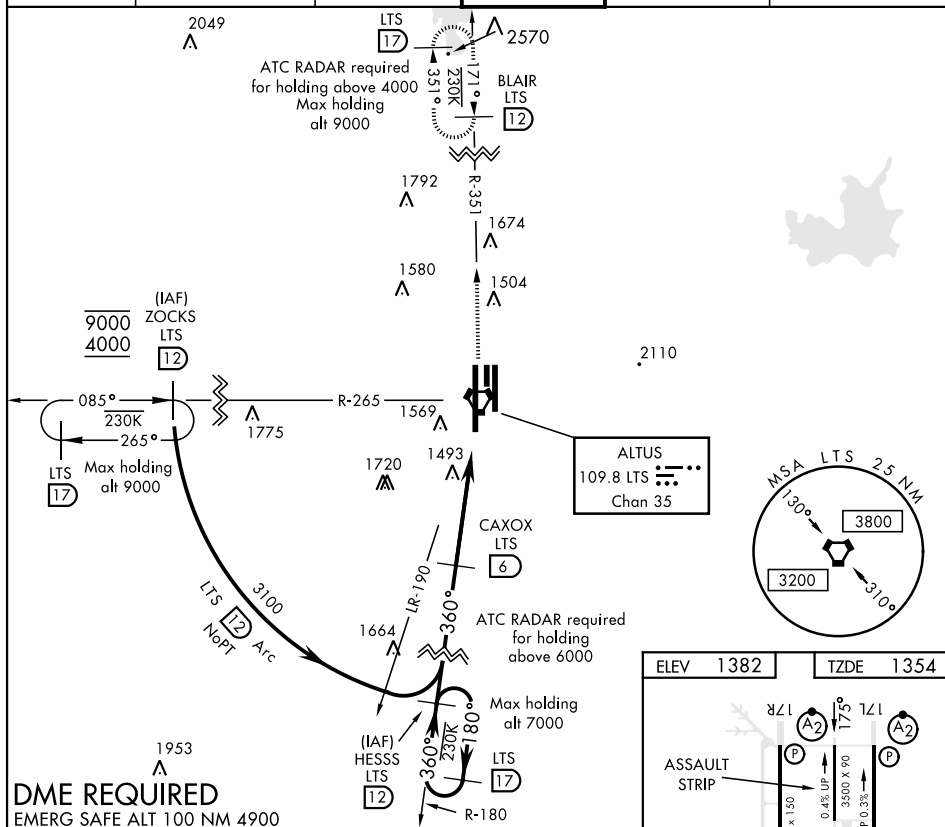
ALTUS AFB (KLTS)

**T** \* When ALS inop, increase CAT AB RVR to 55 and vis to 1 mile,  
CAT CDE RVR to 60 and vis to 1½ miles.  
\*\* Circling not authorized W of Rwy 17R-35L.

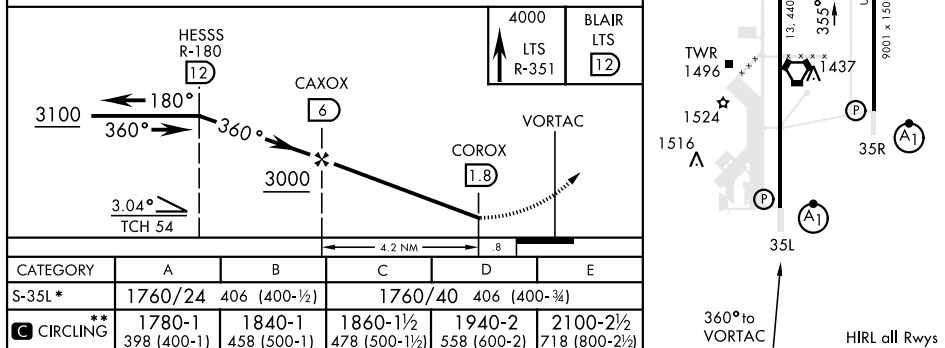
ALSF-1

MISSED APPROACH: Climb to 4000 on  
LTS VORTAC R-351 to BLAIR and hold.

ATIS ★	FORT WORTH CENTER	ALTUS APP CON	ALTUS TOWER ★	GND CON	CLNC DEL
109.8 273.5	133.5 350.35	125.1 353.7	119.65 254.4	121.85 275.8	120.65 284.7



**DME REQUIRED**  
EMERG SAFE ALT 100 NM 4900



ALTUS, OKLAHOMA

34°40'N-99°16'W

ALTUS AFB (KLTS)

Amdt 2 12SEP19

VOR or TACAN RWY 35L

SC-1, 31 DEC 2020 to 28 JAN 2021

SC-1, 31 DEC 2020 to 28 JAN 2021