

ALTUS, OKLAHOMA

VOR or TACAN RWY 17R

VORTAC LTS 109.8 Chan 35	APCH CRS 171°	Rwy Idg 13,440 TDZE 1379 Arpt Elev 1382
--	-------------------------	--

AL-482 [USAF]

ALTUS AFB (KLTS)

T * When ALS inop, increase CAT AB RVR to 55 and vis to 1 mile,
CAT CDE RVR to 60 and vis to 1½ miles.
** Circling not authorized W of Rwy 17R-35L.

SALSF

A₂

MISSED APPROACH: Climb to 4000 on
LTS VORTAC R-180 to HESSS and hold.

ATIS ★
109.8 273.5

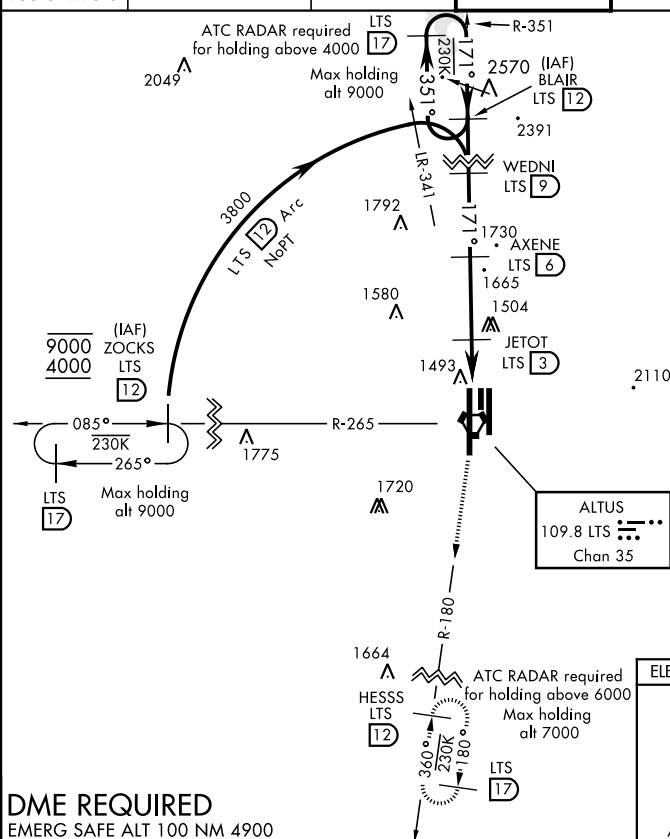
FORT WORTH CENTER
133.5 350.35

ALTUS APP CON
125.1 353.7

ALTUS TOWER★
119.65 254.4

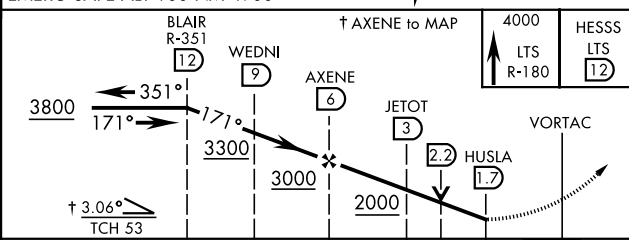
GND CON
121.85 275.8

CLNC DEL
120.65 284.7

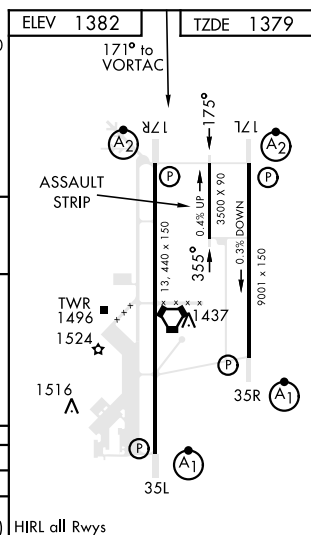


DME REQUIRED

EMERG SAFE ALT 100 NM 4900



			← 3 NM ← 1.3 NM ← 5 NM		
CATEGORY	A	B	C	D	E
S-17R*	1760/40	381 (400-¾)	1760/45	381	(400-⅞)
C CIRCLING**	1780-1 398 (400-1)	1840-1 458 (500-1)	1860-1½ 478 (500-1½)	1940-2 558 (600-2)	2100-2½ 718 (800-2½)



ALTUS, OKLAHOMA

34°40'N-99°16'W

ALTUS AFB (KLTS)

Amdt 2 12SEP19

VOR or TACAN RWY 17R

SC-1, 31 DEC 2020 to 28 JAN 2021

SC-1, 31 DEC 2020 to 28 JAN 2021