

RNAV (GPS) Z RWY 35R

AL-482 (USAF)

ALTUS AFB (KLTS)

WAAS CH 41169 W35B	APCH CRS 355°	Rwy Idg 9001 TDZE 1362 Arpt Elev 1382
--------------------------	------------------	---

* When ALS inop increase CAT ABCDE RVR to 40, vis to 3/4 mile; RVR 18 authorized with use of FD or AP or HUD to DA.

** When ALS inop increase CAT ABCDE RVR to 40. vis to 3/4 mile.

*** When ALS inop increas CAT AB RVR to 55, vis to 1 mile; CAT CDE RVR 50, vis to 1 mile.

ALSF-1

MISSED APPROACH: Climb to 4000 direct JEPKI and hold.

ATIS★ 109.8 273.5	FORT WORTH CENTER 133.5 350.35	APP CON 125.1 353.7	TOWER★ 119.65 254.4	GND CON 121.85 275.8	CLNC DEL 120.65 284.7
----------------------	-----------------------------------	------------------------	------------------------	-------------------------	--------------------------

**** Circling not authorized
W of Rwy 17R-35L.

DME/DME RNP-0.3 NA

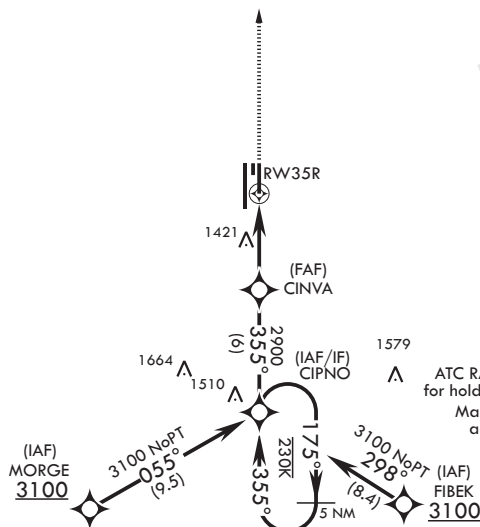
RNP APCH

For uncompensated Baro-VNAV systems, procedure NA below -17°C (2°F) or above 54°C (130°F).



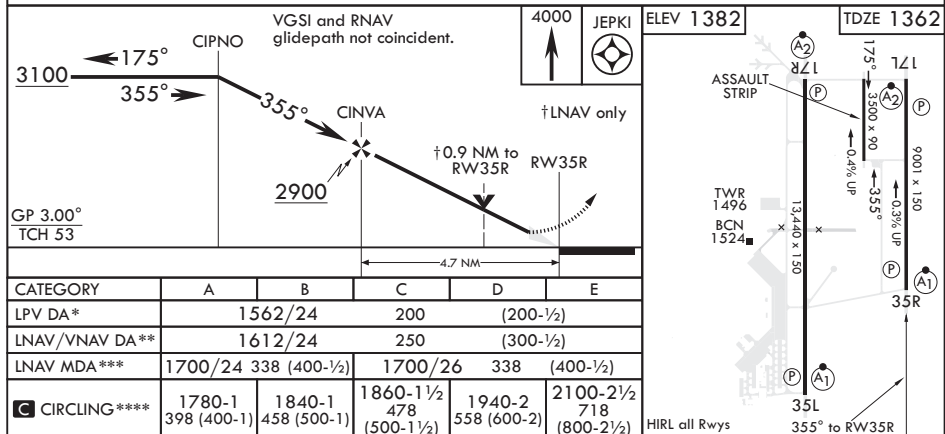
ATC RADAR required
for holding.
Max holding
1.0000

2346



ATC RADAR required
for holding above 4000.
Max holding
alt 7000

EMERG SAFE ALT 100 NM 4900



ALTUS, OKLAHOMA

34°40'N - 99°16'W

ALTUS AFB (KLTS)

Amdt 1 20JUN19

RNAV (GPS) Z RWY 35R