


RNAV (GPS) Z RWY 17R

WAAS CH 41167 W17B	APCH CRS 175°	Rwy Idg 13,440 TDZE 1379 Arpt Elev 1382
--------------------------	------------------	---

AL-482 (USAF)

ALTUS AFB (KLTS)

<p>T * When ALS inop increase CAT ABCDE to 45, vis to 7/8 mile. ** When ALS inop, increase CAT AB RVR to 55 and vis to 1 mile. CAT CDE RVR to 60 and vis to 1 1/8 mile. *** Circling not authorized W of Rwy 17R-35L.</p>	<p>SALS</p> 	<p>MISSED APPROACH: Climb to 4000 direct OKKIE and hold.</p>
--	--	---

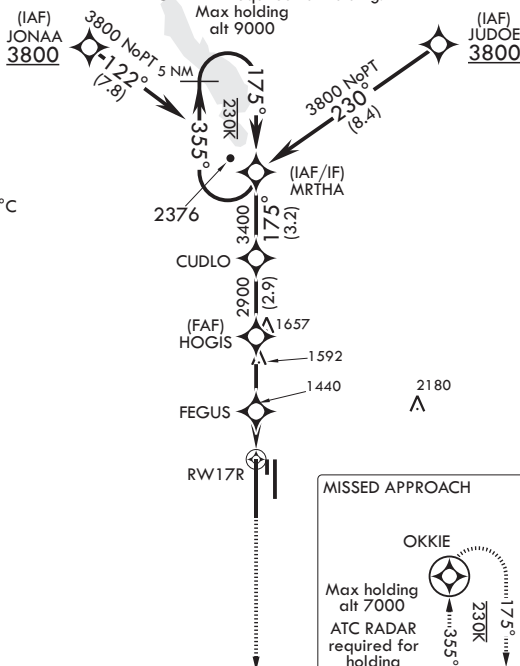
ATIS★ 109.8 273.5	FORT WORTH CENTER 133.5 350.35	APP CON 125.1 353.7	TOWER★ 119.65 254.4	GND CON 121.85 275.8	CLNC DEL 120.65 284.7
----------------------	-----------------------------------	------------------------	------------------------	-------------------------	--------------------------

RNP APCH

DME/DME RNP-0.3 NA

ATC RADAR required for holding.

For uncompensated Baro-VNAV systems, procedure NA below -17°C or above 54°C (130°F).



EMERG SAFE ALT 100 NM 4900

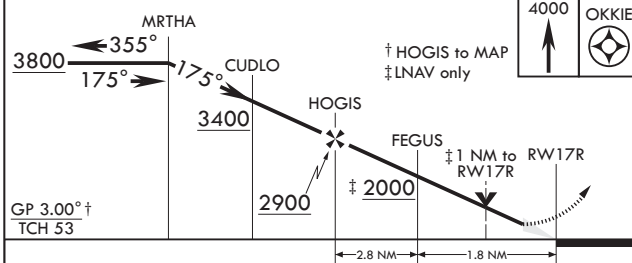
MISSED APPROACH

OKKIE

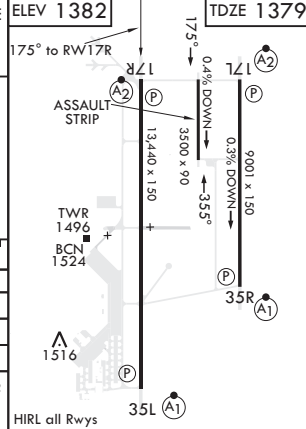
Max holding
alt 7000
ATC RADAR
required for
holding
above 4000.

MSA RVP 19 R 25 NM

3800



CATEGORY	A	B	C	D	E
LPV DA	1579/40		200	(200-¾)	
LNAV/VNAV DA*	1660/40		281	(300-¾)	
LNAV MDA**	1760/40 381 (400-¾)		1760/45 381	(400-¾)	
C CIRCLING***	1780-1 398 (400-1)	1840-1 458 (500-1)	1860-1½ 478 (500-1½)	1940-2 558 (600-2)	2100-2½ 718 (800-2½)



ALTUS, OKLAHOMA

34°40'N - 99°16'W

ALTUS AFB (KLTS)

RNAV (GPS) Z RWY 17R

Amdt 1 15AUG19

SC-1, 31 DEC 2020 to 28 JAN 2021