

ALTUS, OKLAHOMA

## RNAV (RNP) X RWY 17R

APCH CRS 175°	Rwy Idg 13,440 TDZE 1379 Arpt Elev 1382
------------------	---

AL-482 (USAF)

ALTUS AFB (KLTS)

**T** \* When ALS inop, increase RVR to 45, vis to 7/8 mile.  
\*\* When ALS inop. increase RVR to 60, vis to 1 1/8 miles.



**MISSED APPROACH:** Climb to 4000 on track 175° to OKKIE and hold.

ATIS★  
109.8 273.5

APP CON  
125.1 353.7

TOWER★  
119.65 254.4

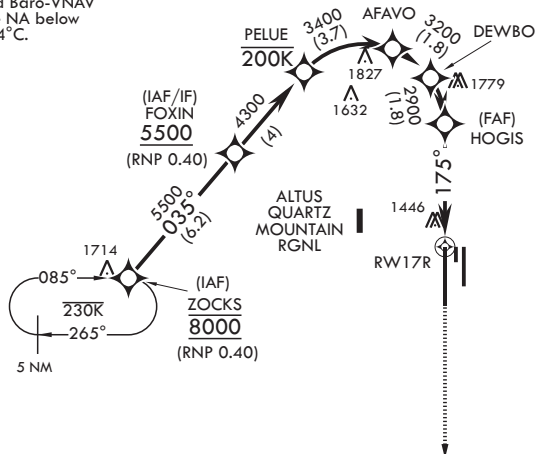
GND CON  
121.85 275.8

CLNC DEL  
120.65 284.7

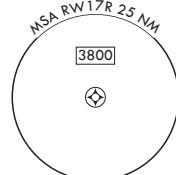
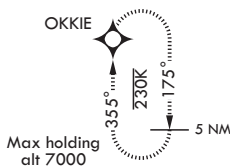
RNP AR APCH - RF

Max 200 KIAS until DEWBO - 2287

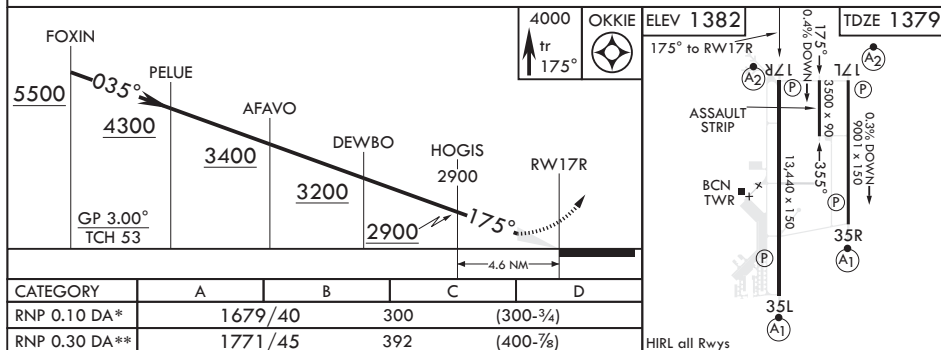
For uncompensated Baro-VNAV systems, procedure NA below  $-17^{\circ}\text{C}$  or above  $54^{\circ}\text{C}$ .



FOR USE BY 97  
AMW ACFT ONLY  
AUTHORIZATION  
REQUIRED



EMERG SAFE ALT 100 NM 4900



ALTUS, OKLAHOMA

34°40'N - 99°16'W

ALTUS AFB (KLTS)

Orig 03DEC20

RNAV (RNP) X RWY 17R