

ALTUS, OKLAHOMA

ILS or RNAV (GPS) Y RWY 17R

LOC I-ALT 111.3	APCH CRS 175°	Rwy ldg 13,440
		TDZE 1379
		Arpt Elev 1382

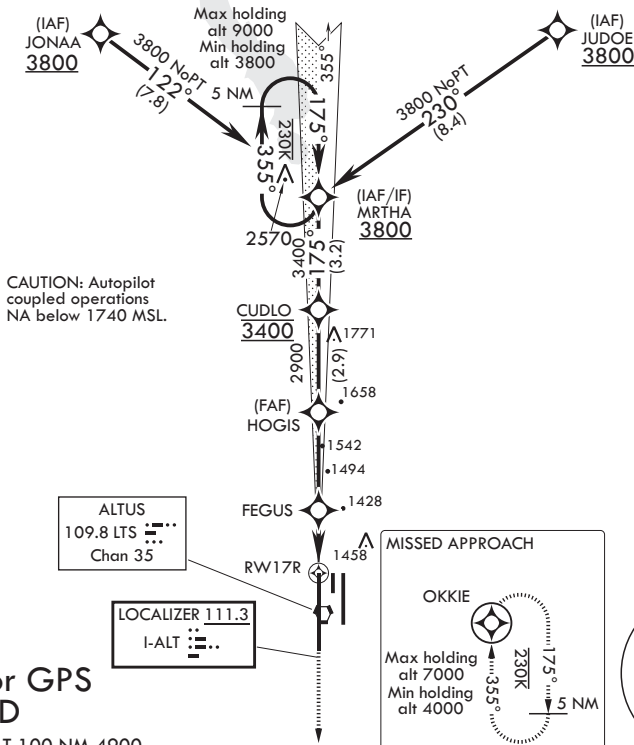
AL-482 (USAF)

ALTUS AFB (KLTS)

▼ * When ALS inop, increase CAT A8 RVR to 55, vis to 1 mile; CAT CDE RVR to 60, vis to 1 1/8 miles; ** Circling not authorized W of Rwy 17R-35L.	SALS 	MISSED APPROACH: Climb to 4000 direct OKKIE and hold.
---	-----------------	--

ATIS★ 109.8 273.5	FORT WORTH CENTER 133.5 350.35	APP CON 125.1 353.7	TOWER★ 119.65 254.4	GND CON 121.85 275.8	CLNC DEL 120.65 284.7
------------------------------------	---	--------------------------------------	--------------------------------------	---------------------------------------	--

DME/DME RNP 0.3 NA

RNAV1 or GPS
REQUIRED

EMERG SAFE ALT 100 NM 4900

MRTHA		↑ LNAV only		4000	OKKIE	ELEV 1382	TDZE 1379
3800		3400		2900		2000	
GS 3.00°		TCH 53		2.8 NM		1.8 NM	
CATEGORY	A	B	C	D	E		
S-ILS 17R	1579/40		200	(200-3/4)			
LNAV MDA*	1760/40 381 (400-3/4)		1760/45	381	(400-7/8)		
CIRCLING**	1780-1 398 (400-1)	1840-1 458 (500-1)	1860-1 1/2 478 (500-1 1/2)	1940-2 558 (600-2)	2100-2 1/2 718 (800-2 1/2)	HIRL all Rwy's	

ALTUS, OKLAHOMA

34°40'N - 99°16'W

ALTUS AFB (KLTS)

Orig 23MAY19

ILS or RNAV (GPS) Y RWY 17R