

VORTAC TUL <b>114.4</b> Chan <b>91</b>	APP CRS <b>262°</b>	Rwy Idg TDZE Apt Elev <b>7376</b> <b>652</b> <b>678</b>
--	------------------------	--

VOR or TACAN RWY 26  
TULSA INTL (TUL)

**⚠** Circling NA for Cat E south of Rwy 8-26. VOR Minimums: For inop ALS, increase Cat A/B visibility to 1 SM and Cat E to 1½ SM. DME Minimums: For inop ALS, increase Cat A/B visibility to 1 SM and Cat E to 1½ SM.

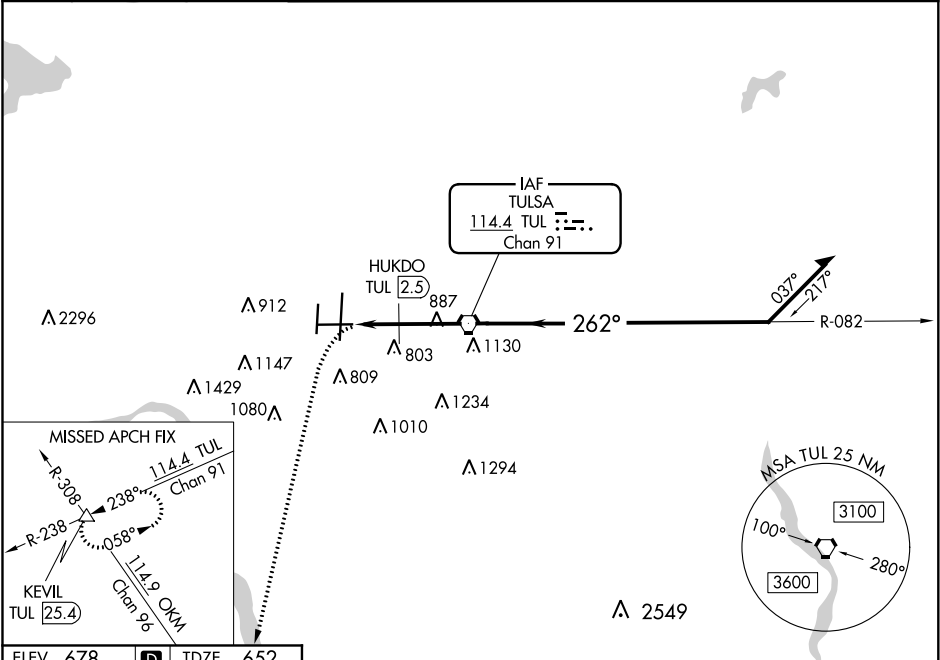
**ASR**

**MALSR**

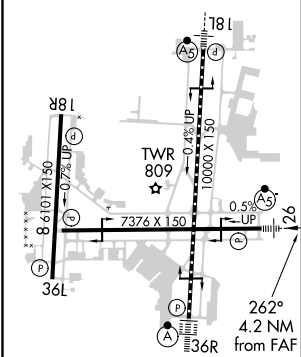
**AS**

**MISSED APPROACH:** Climbing left turn to 2600 via heading 220° and TUL R-238 to KEVIL INT/TUL 25.4 DME and hold.

D-ATIS <b>124.9 377.2</b>	TULSA APP CON <b>124.0 338.3</b>	TULSA TOWER <b>121.2 310.8</b> (Rwys 18L-36R, 8-26) <b>118.7 257.8</b> (Rwy 18R-36L)	GND CON <b>121.9 348.6</b>	CLNC DEL <b>134.05 284.7</b>
------------------------------	-------------------------------------	--	-------------------------------	---------------------------------



ELEV 678	<b>D</b>	TDZE 652
----------	----------	----------



TDZ/CL Rwy 36R  
HIRL Rwys 8-26, 18L-36R and 18R-36L  
REIL Rwys 8, 18R, 26 and 36L

FAF to MAP 4.2 NM					
Knots	60	90	120	150	180
Min:Sec	4:12	2:48	2:06	1:41	1:24

2600  
hdg 220°

TUL R-238

KEVIL

TUL VORTAC

Remain within 15 NM

082°

2400

262°

2000

1200

1.2 + 0.5 + 2.5 NM

HUKDO TUL 2.5

TUL 3

TUL 4.2

≤ 2.96°

TCH 57

CATEGORY	A	B	C	D	E
S-26	1200-¾	548 (600-¾)	1200-1¼	548 (600-1¼)	
<b>C</b> CIRCLING	1200-1	522 (600-1)	1520-2½ 842 (900-2½)	1520-2¾ 842 (900-2¾)	1520-3 842 (900-3)
HUKDO FIX MINIMUMS					
S-26	1080-¾	428 (500-¾)	1080-¾	428 (500-¾)	1080-¾ 428 (500-¾)
<b>C</b> CIRCLING	1120-1 442 (500-1)	1160-1 482 (500-1)	1520-2½ 842 (900-2½)	1520-2¾ 842 (900-2¾)	1520-3 842 (900-3)

SC-1, 31 DEC 2020 to 28 JAN 2021

SC-1, 31 DEC 2020 to 28 JAN 2021