

HI-VOR/DME or TACAN RWY 26

VORTAC TUL 114.4 Chan 91	APCH CRS 262°	Rwy ldg THRE 633 Arpt Elev 678
--	-------------------------	--

JAL-432 [USAF]

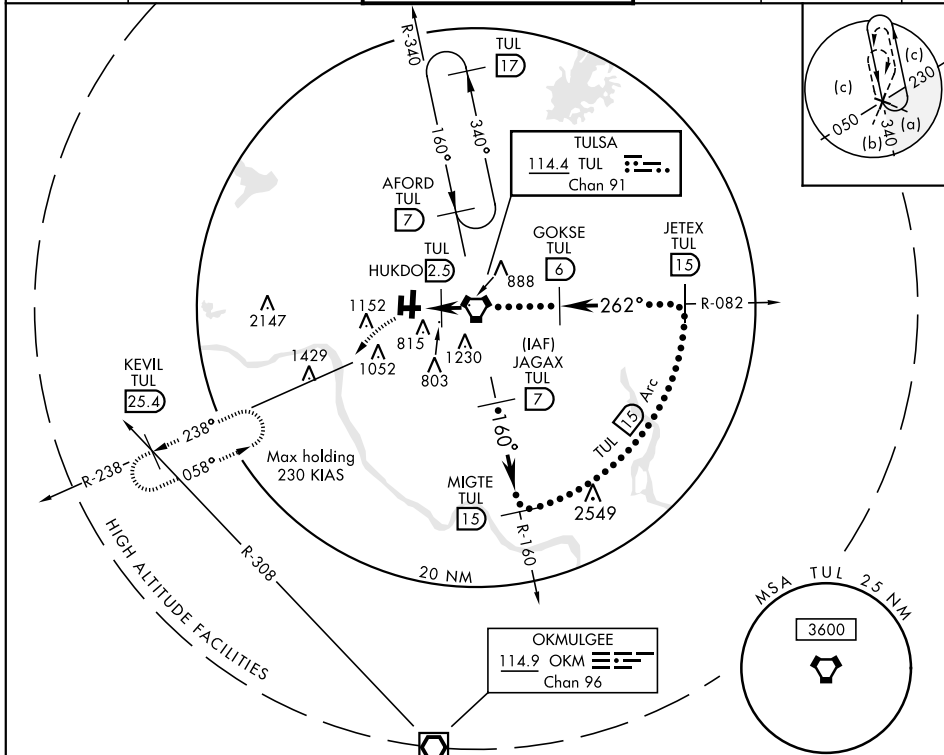
TULSA INTL (KTUL)

*When ALS inop, increase CAT CDE vis to 1¼ miles.
 **CAT E circling not authorized S of Rwy 8-26.

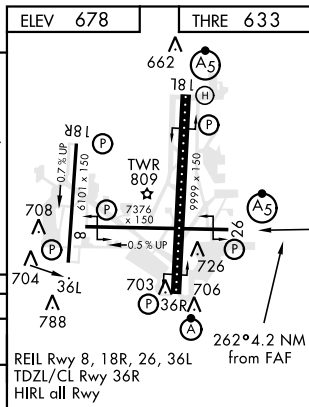
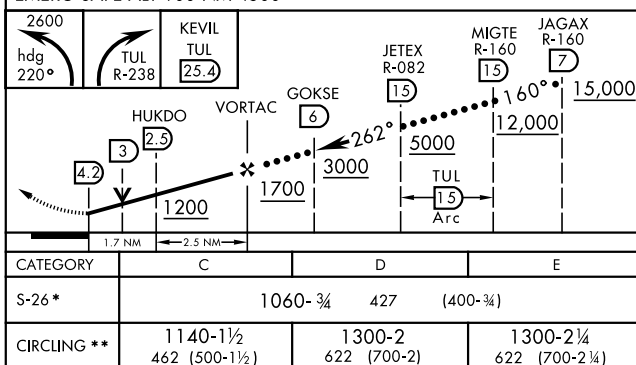


MISSED APPROACH: Climbing left turn to 2600
 via heading 220° and TUL VORTAC R-238 to
 KEVIL INT/TUL 25.4 DME and hold.

ATIS 124.9 377.2	TULSA APP CON 175°-354° 124.0 338.3 355°-174° 119.1 351.8	TULSA TOWER 121.2 310.8 Rwy 18L-36R, 8-26 118.7 257.8 Rwy 18R-36L	GND CON 121.9 348.6	CLNC DEL 134.05 284.7	ASR
----------------------------	---	---	-------------------------------	---------------------------------	-----



EMERG SAFE ALT 100 NM 4500



TULSA, OKLAHOMA

36°12'N-95°53'W

TULSA INTL (KTUL)

Amdt 3A 23AUG12

HI-VOR/DME or TACAN RWY 26