

WAAS Ch 53699 W22A	APP CRS 220°	Rwy Idg 6601 TDZE 384 Apt Elev 390
--	------------------------	---

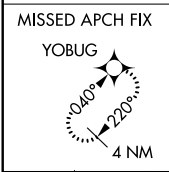
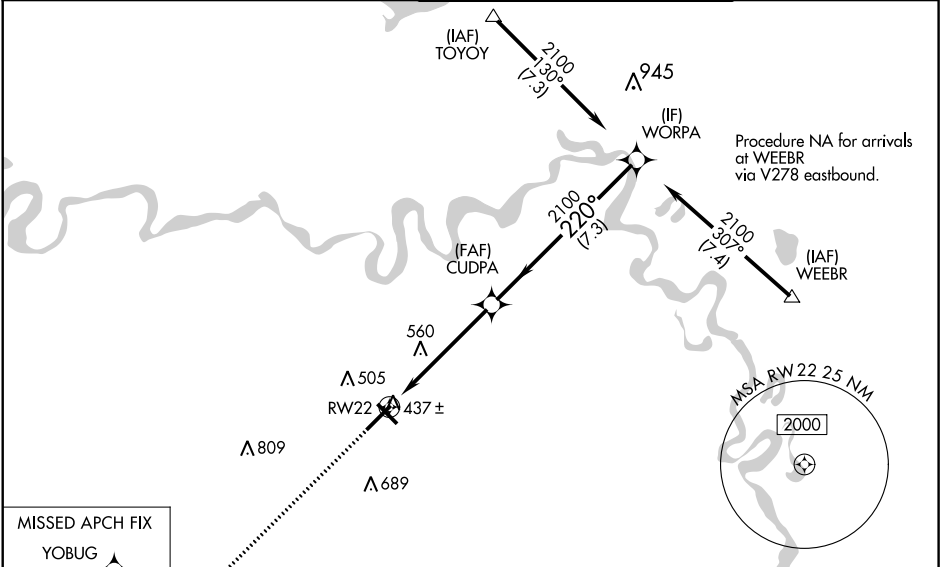
RNAV (GPS) RWY 22
TEXARKANA RGNL-WEBB FIELD (TXK)

⚠ DME/DME RNP-0.3 NA. For uncompensated Baro-VNAV systems, LNAV/VNAV NA below -1.5°C (5°F) or above 48°C (118°F). When local altimeter setting not received, use J Lynn Helms Sevier County altimeter setting and increase all DA/MDA 100 feet, increase LPV all Cats visibility ¼ mile, LNAV/VNAV all Cats visibility ½ mile, LNAV and circling Cat C and D visibility ¼ mile. Baro-VNAV and VDP NA when using J Lynn Helms Sevier County altimeter setting. For inoperative MALSR when using J Lynn Helms Sevier County altimeter setting increase LPV all Cats visibility to 1¼.

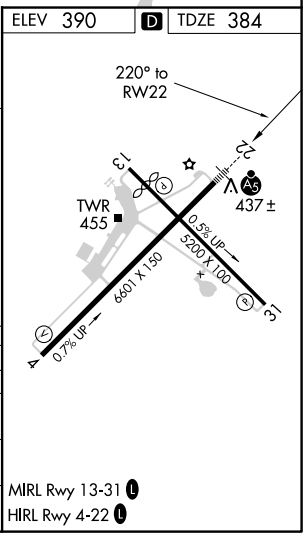
MALSR

⚠ MISSED APPROACH:
Climb to 2000 direct YOBUG and hold.

ATIS 120.2	FORT WORTH CENTER 123.925 269.475	TEXARKANA TOWER ★ 123.875 (CTAF) 0 235.625	GND CON 119.225
----------------------	---	---	---------------------------



2000	YOBUG			
* LNAV only.				
		CUDPA	WORPA	Procedure Turn NA
		2100	2100	
		1.2	4 NM	7.3 NM
CATEGORY	A	B	C	D
LPV DA		634-1½	250 (300-1½)	
LNAV/VNAV DA		687-1½	303 (300-1½)	687-¾ 303 (300-¾)
LNAV MDA	820-1½	436 (500-1½)	820-¾ 436 (500-¾)	820-1 436 (500-1)
CIRCLING	820-1 430 (500-1)	860-1 470 (500-1)	900-1½ 510 (600-1½)	1000-2 610 (700-2)



SC-1, 31 DEC 2020 to 28 JAN 2021

SC-1, 31 DEC 2020 to 28 JAN 2021