

LOC/DME I-TTL 110.55 Chan 42 (Y)	APP CRS 360°	Rwy Idg 6015 TDZE 224 Apt Elev 224
--	------------------------	---

ILS or LOC RWY 36

STUTT GART MUNI CARL HUMPHREY FIELD (SGT)

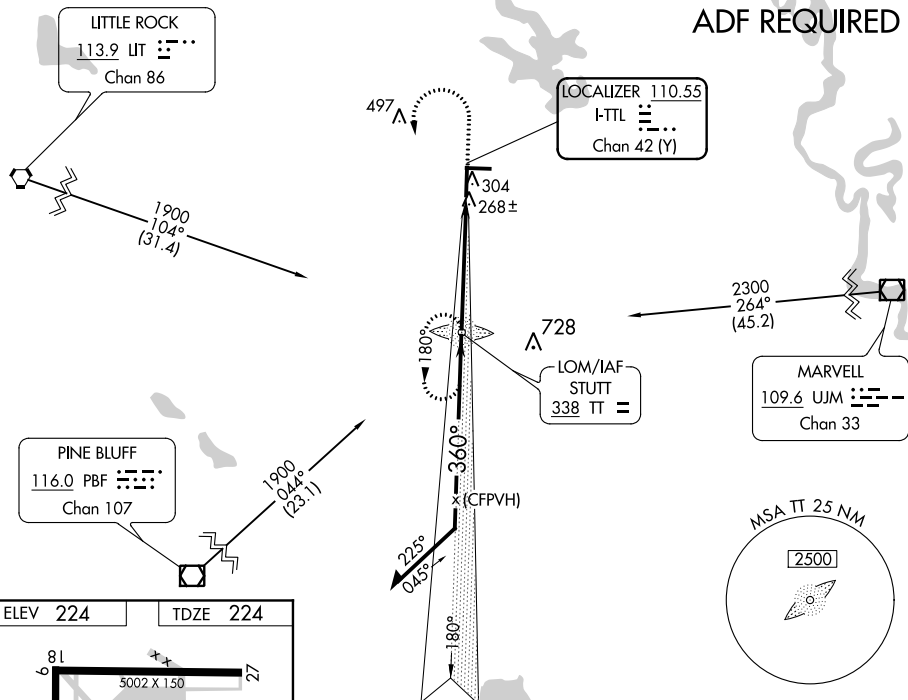
When local altimeter setting not received, use Bill and Hillary Clinton National/Adams Field altimeter setting and increase all DA/MDA 100 feet. VDP NA with Bill and Hillary Clinton National/Adams Field altimeter setting. For inop MALSf when using Bill and Hillary Clinton National/Adams Field altimeter setting, increase ILS alt Cats visibility to 1 mile. Night landing Rwy 9 and 27 NA.

MALSF



MISSED APPROACH: Climb to 800, then climbing left turn to 1900 direct TT LOM and hold.

AWOS-3PT 119.025	LITTLE ROCK APP CON 135.4 353.6	CLNC DEL 123.7	UNICOM 122.8 (CTAF) 0
----------------------------	---	--------------------------	---------------------------------



FAF to MAP 4.9 NM				
Knots	60	90	120	150
Min:Sec	4:54	3:16	2:27	1:58

[illegible]