

RNAV (RNP) Z RWY 35L
WILL ROGERS WORLD (OKC)

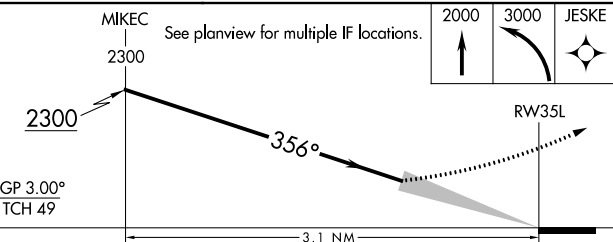
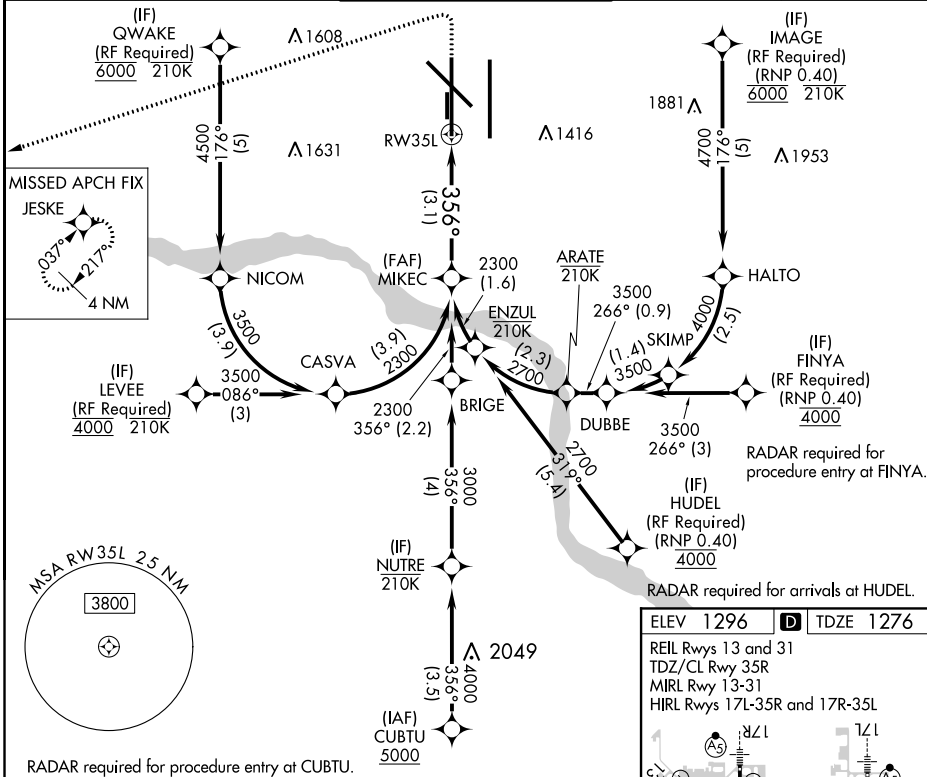
WILL ROGERS WORLD (OKC)

For uncompensated Baro-VNAV systems, procedure NA below -12°C (11°F) or above 54°C (130°F). GPS required. Simultaneous approach authorized with Rwy 35R. Use of FD or AP providing RNAV track guidance required during simultaneous operations. For Inop ALS, increase RNP 0.30 all Cnts visibility to 1¼ SM.

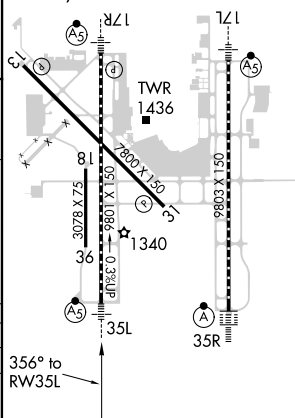
MALSR

MISSED APPROACH: Climb to 2000 then climbing left turn to 3000 direct JESKE and hold.

CLNC DEL
124.35

REIL Rwy 13 and 31
TDZ/CL Rwy 35R
MIRL Rwy 13-31
HIRL Rwy 17L-35R and 17R-35L



WILL ROGERS WORLD (OKC)

35°24'N-97°36'W

RNAV (RNP) Z RWY 35L