
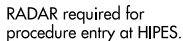


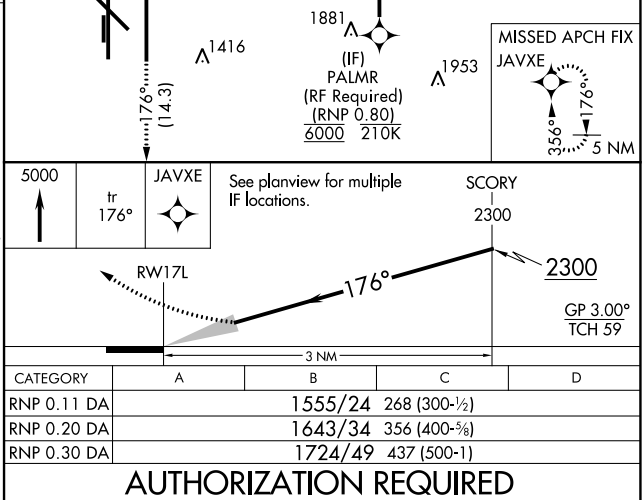
RNAV (RNP) Z RWY 17L
WILL ROGERS WORLD (OKC)

<p>MALSR</p> 	<p>MISSED APPROACH: Climb to 5000 on track 176° to JAVXE and hold, continue climb-in-hold to 5000.</p>
--	---

RADAR required for procedure entry at ATREC.



REIL Rwy 13 and 31
TDZ/CL Rwy 35R
MIRL Rwy 13-31
HIRL Rwy 17L-35R and 17R-35L



WILL ROGERS WORLD (OKC)
RNAV (RNP) Z RWY 17L