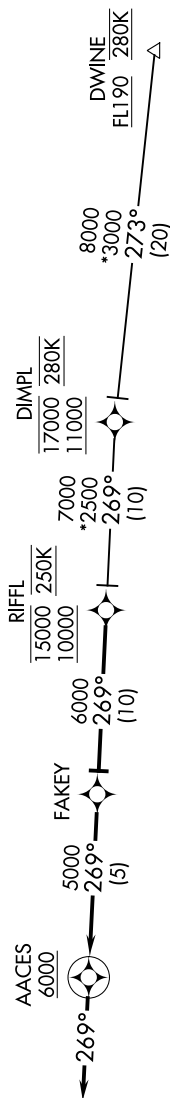


WILL ROGERS WORLD (OKC)  
OKLAHOMA CITY, OKLAHOMA

## RIFFL THREE ARRIVAL (RNAV)

OKC D-ATIS	125.85
OKC CITY APP CON	124.2 336.4



NOTE: RADAR required.  
NOTE: RNAV 1.  
NOTE: DME/DME/IRU o

NOTE: Chart not to scale.

## ARRIVAL ROUTE DESCRIPTION

DIMPL TRANSITION (DIMPL.RIFFL3)  
DWINE TRANSITION (DWINE.RIFFL3)

From RIFFL on track 269° to FAKEY.

LANDING RWYS 17L/R, 35L/R: From FAKEY on track 269° to cross AACES at or above 6000, then on track 269°. Expect RADAR vectors to final approach course.

### RIFFL THREE ARRIVAL (RNAV)

(RIFFL.RIFFL3) 07DEC17

OKLAHOMA CITY, OKLAHOMA  
WILL ROGERS WORLD (OKC)