
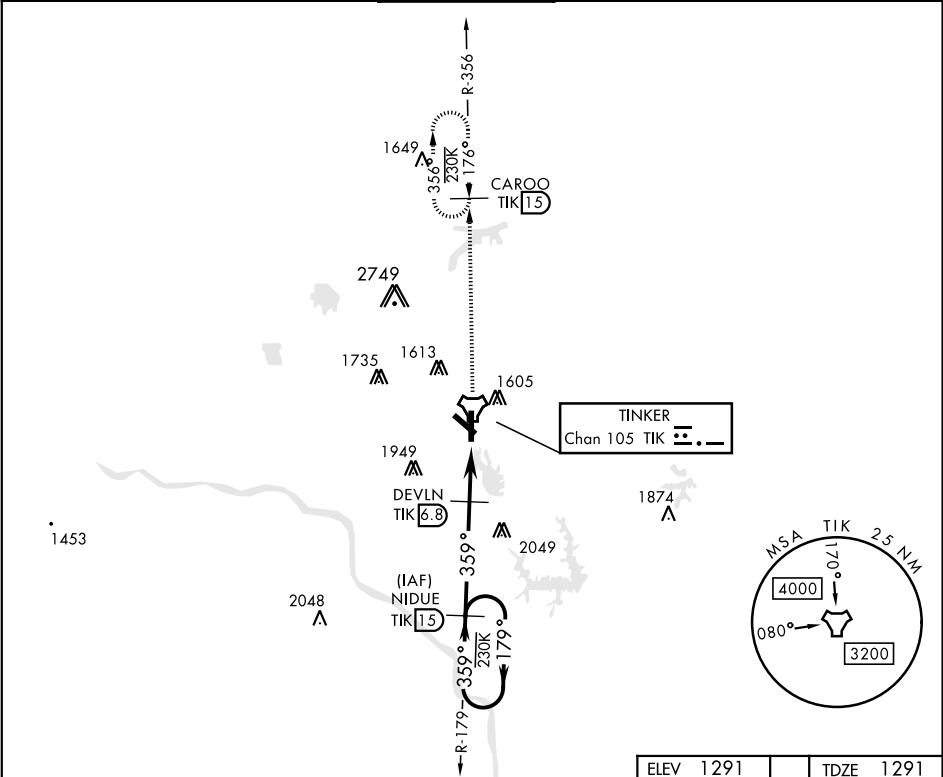


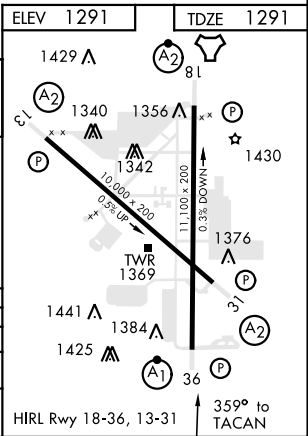
TACAN Z RWY 36

TACAN TIK Chan 105	APCH CRS 359°	Rwy ldg 11,100 TDZE 1291 Arpt Elev 1291	AL-299 [USAF]		TINKER AFB (KTIK)
<div>▼ * When ALS inop, increase CAT AB RVR to 50 and vis to 1 mile, CAT CDE increase vis by ½ mile. ** CAT E Circling not authorized in sector S of Rwy 13-31 and W of Rwy 18-36. Circling NA to Rwy 18.</div>			ALSF-1 	MISSED APPROACH: Climb to 4000 on TIK TACAN R-356 to CAROO and hold.	
ATIS ★ 270.1	OKE CITY APP CON 120.45 288.325	TINKER TOWER 124.45 251.05	GND CON 121.8 275.8	CLNC DEL 119.7 335.8	ASR



EMERG SAFE ALT 100 NM 4700

--	--	--	--	--



TACAN Z RWY 36

SC-1, 31 DEC 2020 to 28 JAN 2021

SC-1, 31 DEC 2020 to 28 JAN 2021